



## The I-95 Corridor in the U.S. Benefits from Intermodality

**John Horsley**

- American Association of State Highway and Transportation Officials
- Executive Director
- [jhorsley@aaashto.org](mailto:jhorsley@aaashto.org)



# I-95 Maine to Florida





## Significance of I-95

- The region served by the I-95 Corridor is old, large, growing, and important to the economy of the United States.
- All modes of transportation in the I-95 region are experiencing congestion and capacity constraints.
- A number of initiatives have been taken to analyze the transportation systems of the I-95 corridor and to identify projects that would produce significant regional benefits.

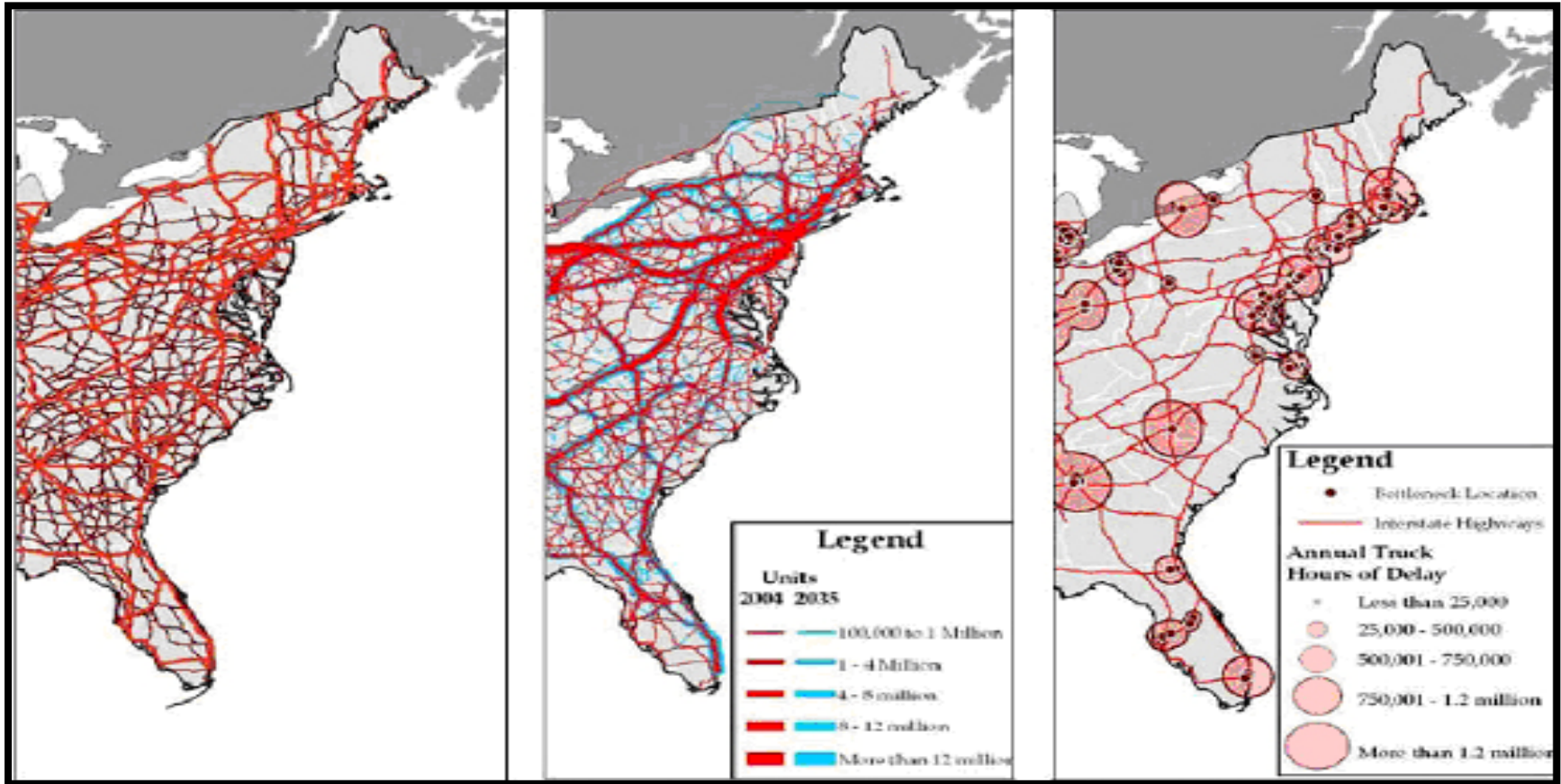


## Significance of I-95, continued

- The I-95 Corridor Coalition is a pioneering organization for dealing with problems and objectives that cross state boundaries.
- Other transportation corridors in the United States are looking to I-95 as a model.

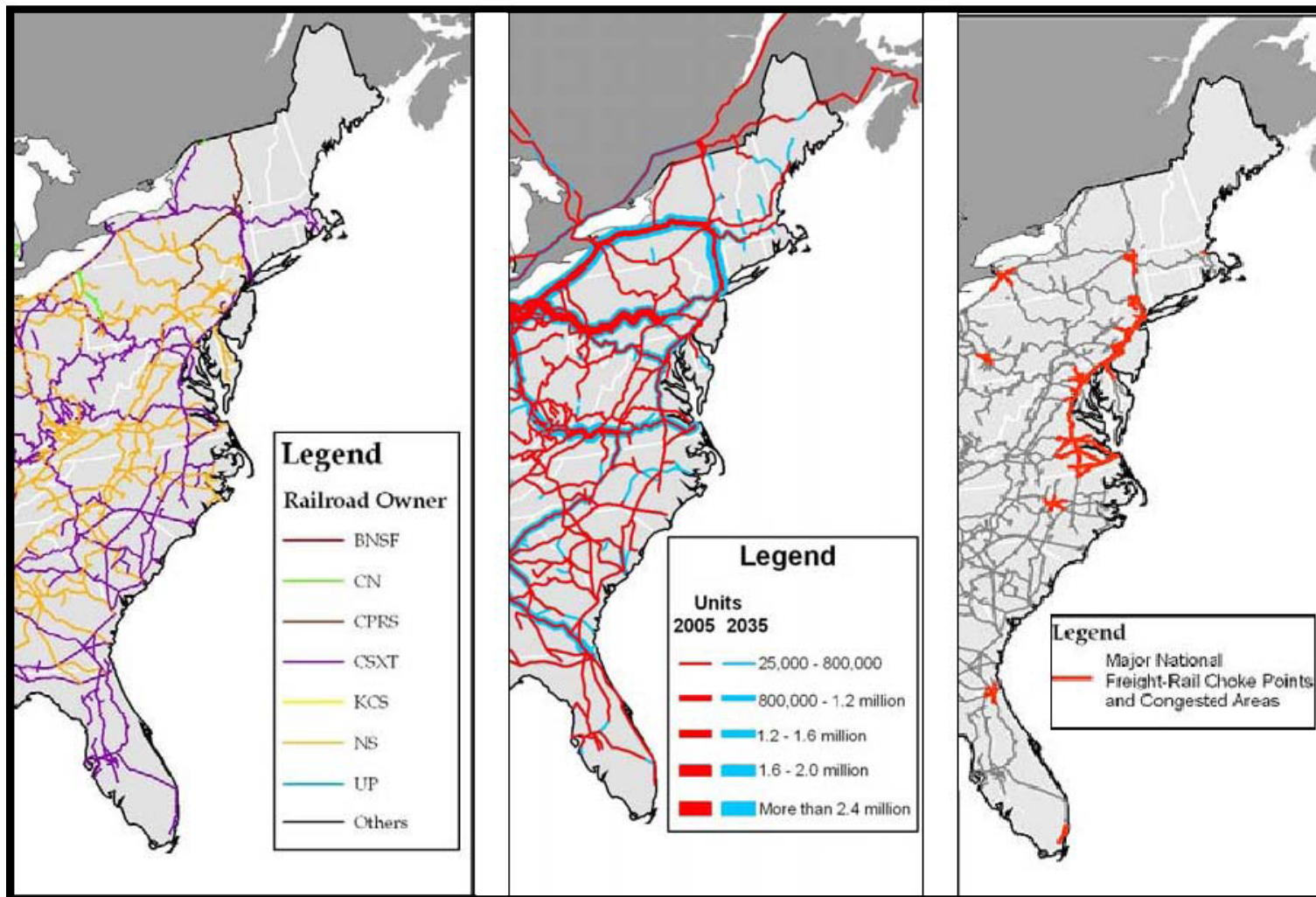
# Highway System

## System, Truck Flows, Bottlenecks

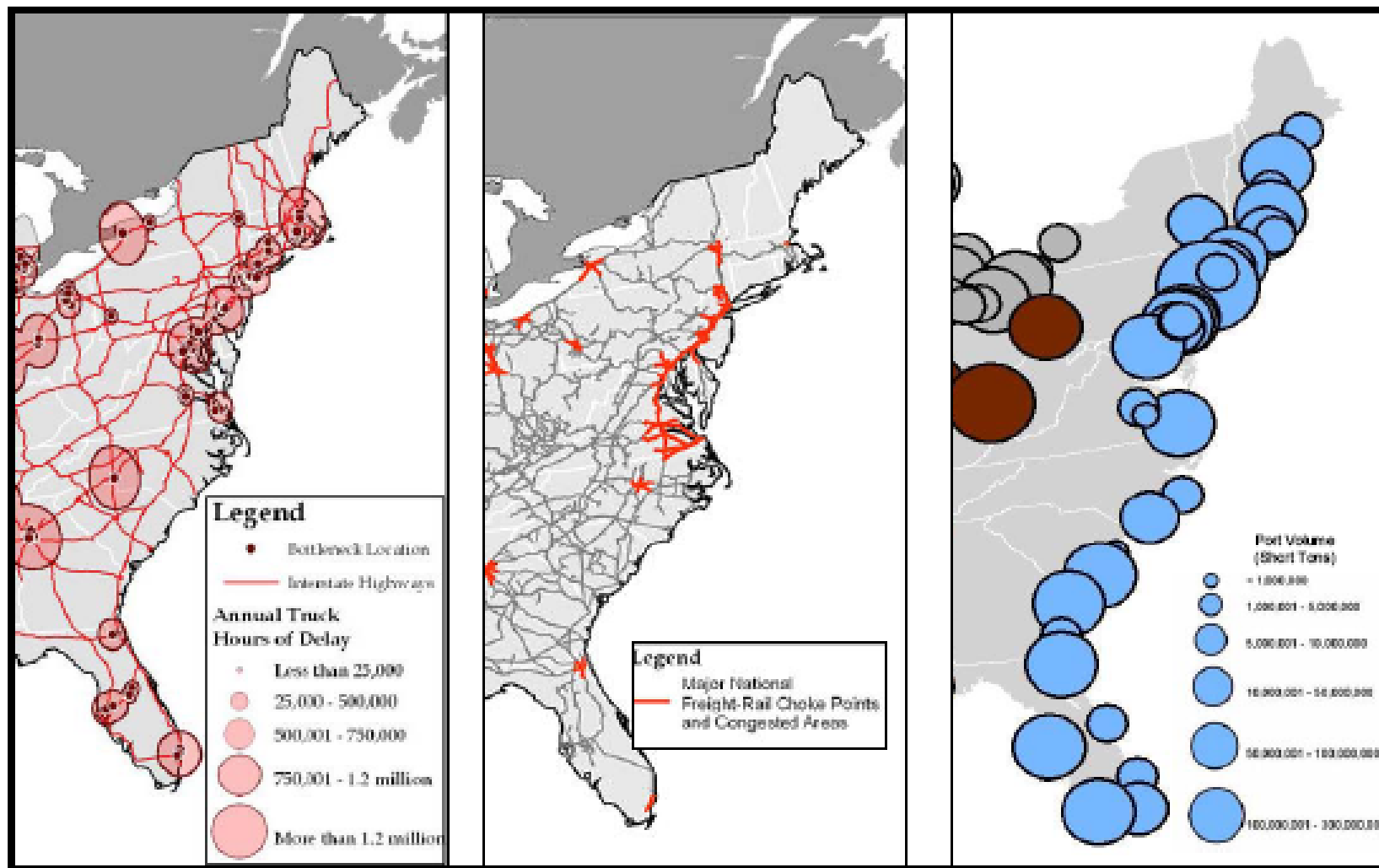


# Rail

## System, Traffic, Chokepoints



# Truck, Rail, Port Bottlenecks, Chokepoints, Congestion





# Multiple Jurisdictions: California Comparison

One State



Five States





## I-95 Corridor Coalition

- State and Local Departments of Transportation
- Transportation Authorities
- Transit and Rail Agencies
- Port Authorities
- Motor Vehicle Agencies
- State Police/Law Enforcement



## I-95 Corridor Coalition, continued

- US Department of Transportation
- Canadian Provincial Departments of Transportation
- Intercity Passenger Rail Providers
- Freight Rail Companies
- Transportation Industry Associates



## I-95 Analysis

- Highway Bottlenecks Study
- Mid-Atlantic Truck Operations
- Mid-Atlantic Rail Operations Study
- Northeast Rail Operations Study
- Short-Sea and Coastal Shipping Options
- Southeast Rail Operations Study

## Corridor Issues

- How can the capacity and performance of a regional freight transportation system be analyzed and measured?
- How can specific investments that will improve regional system performance be identified and prioritized?
- How can the gap between national and state institutions for transportation planning and investment be filled?
- How can the amount of capital needed for a regional transportation investment program be generated and managed?