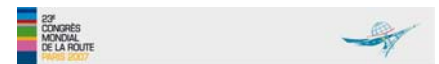


# MEXICO: ROADS AND DEVELOPMENT

**Paul GARNICA**

- Mexican Transport Institute
- Researcher
- [pgarnica@imt.mx](mailto:pgarnica@imt.mx)



# MÉXICO





## CHRONOLOGY

**1900: Beginning of the 20th Century**

**1910: Mexican Revolution**

**1930: Mexican Road Network Starting Point**

**1970: Manual Labour Roads**

**1990: Toward a Modern Country**

**2000: Threshold of the new milenium**

# 1900: Beginning of the 20th Century





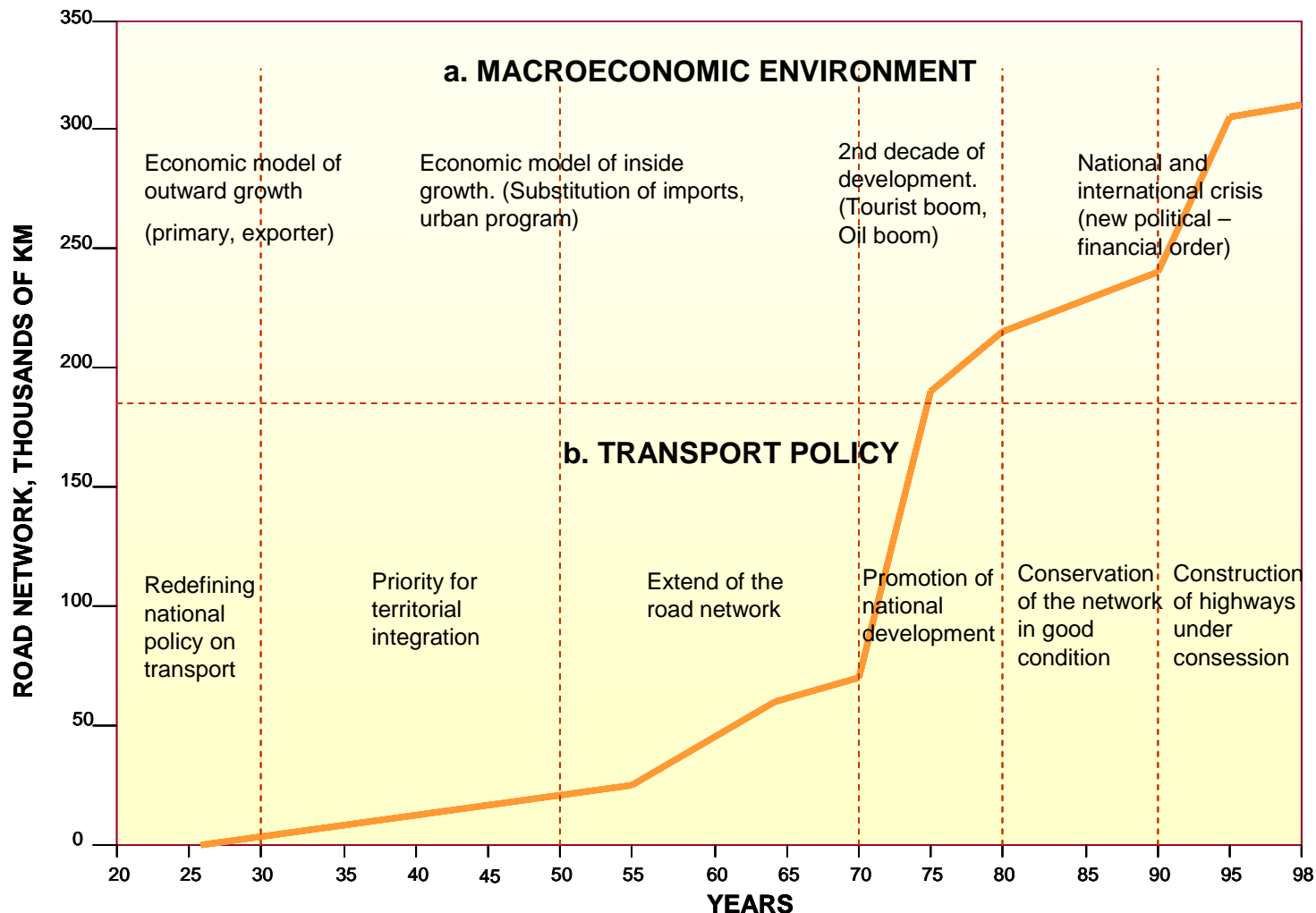
# 1910: The Mexican Revolution



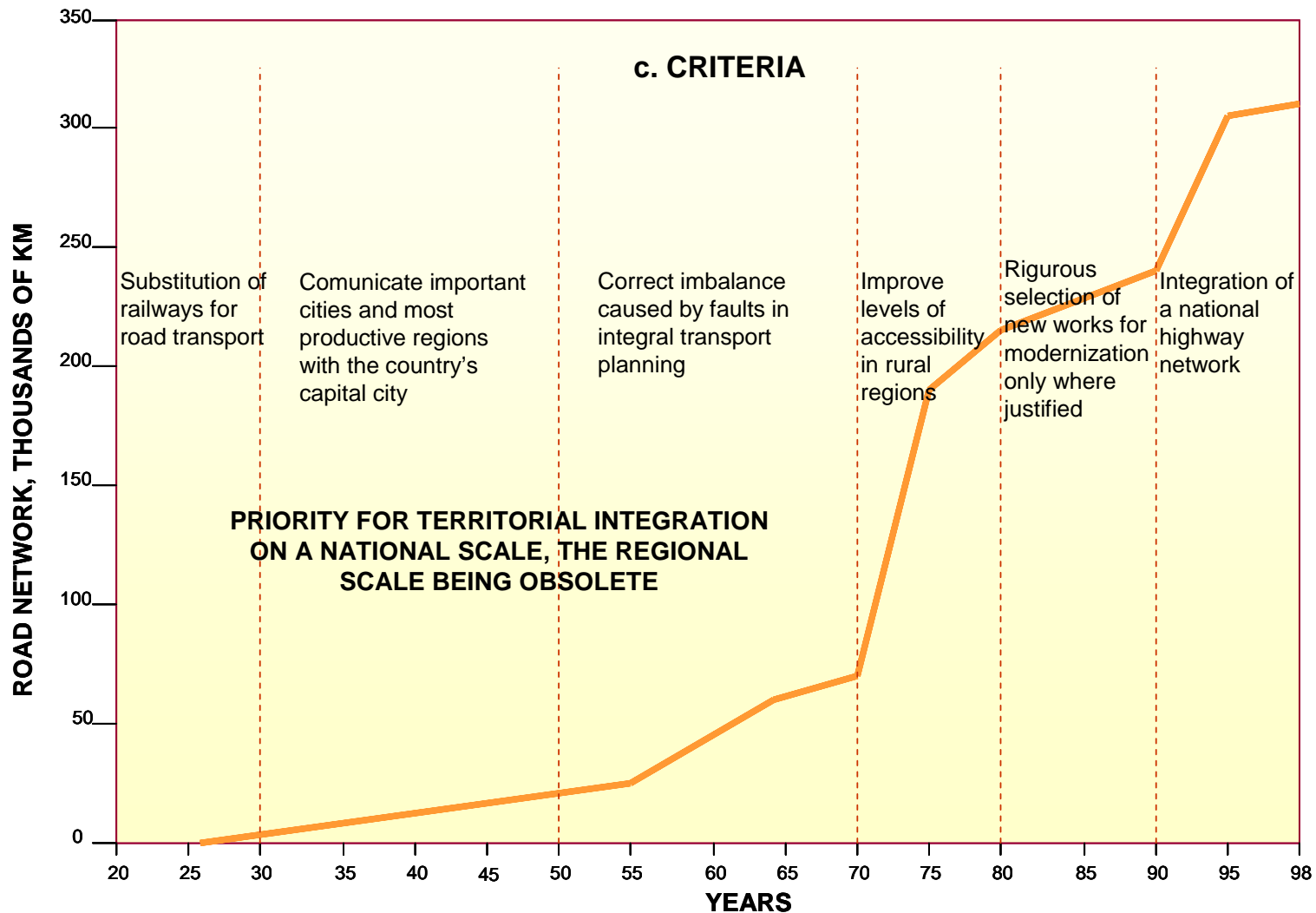
# 1930: Beginning of the road network



# EVOLUTION OF MEXICAN ROAD NETWORK

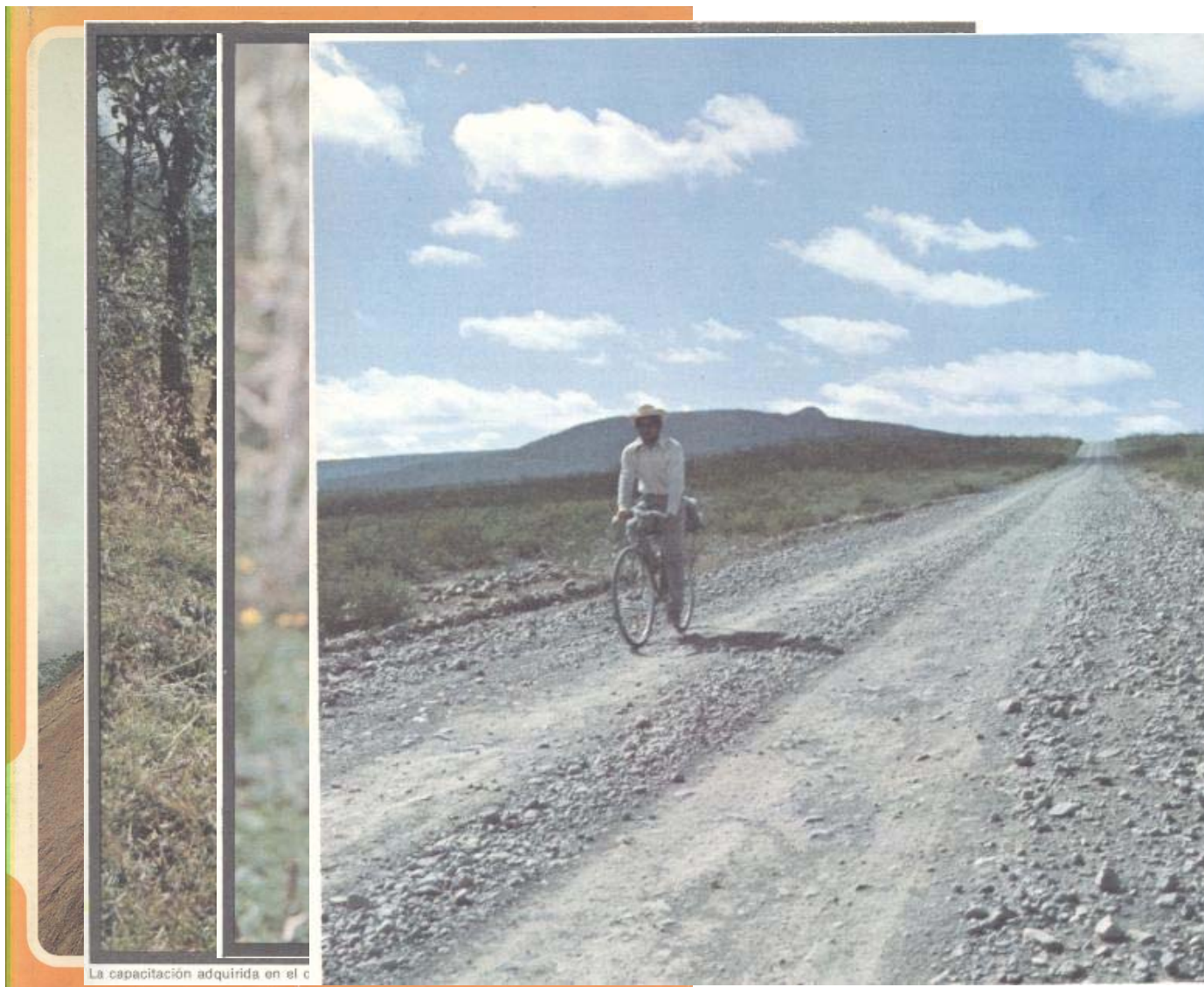


# EVOLUTION OF THE MEXICAN ROAD NETWORK





# 1970: MANUAL LABOUR ROADS

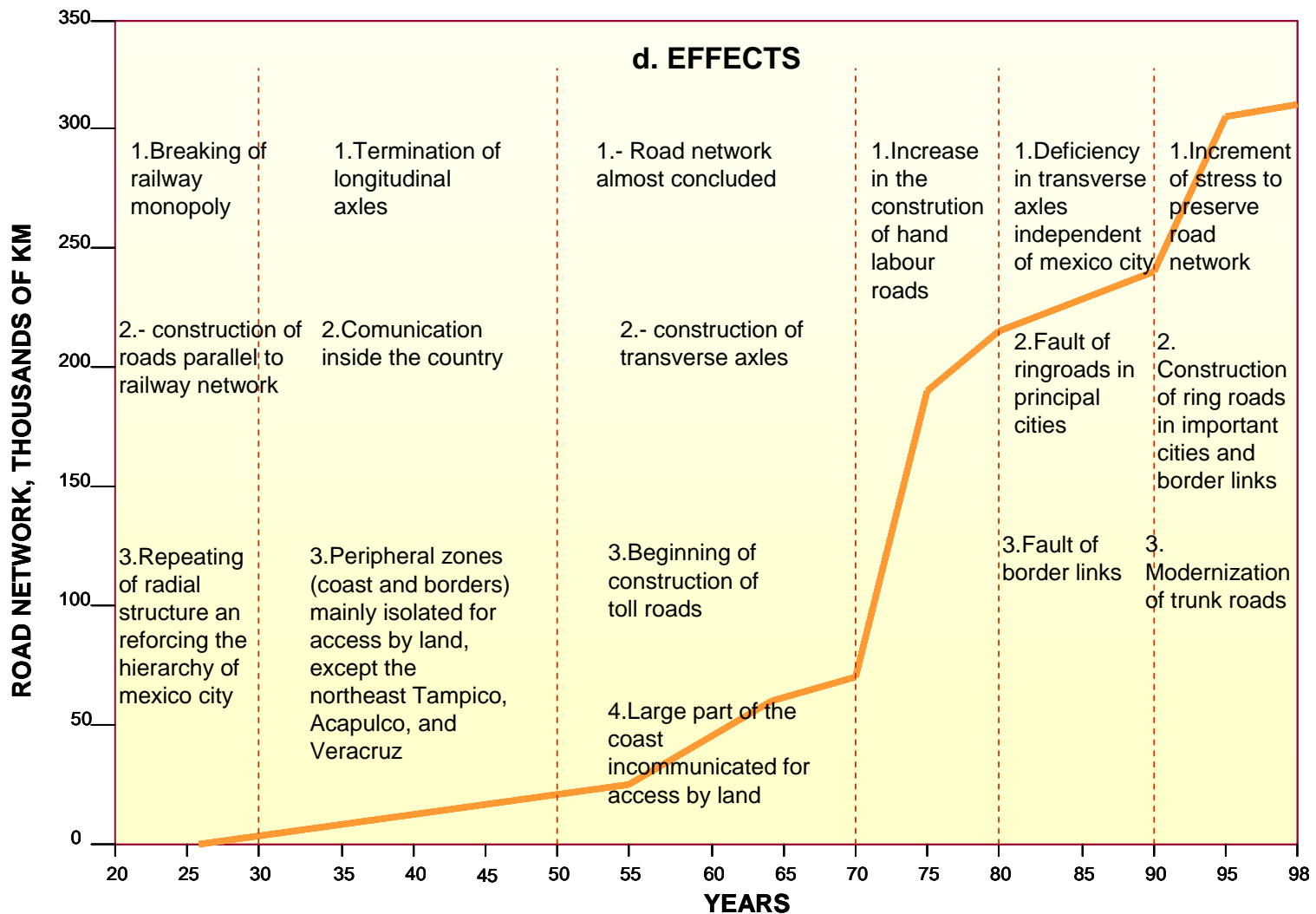




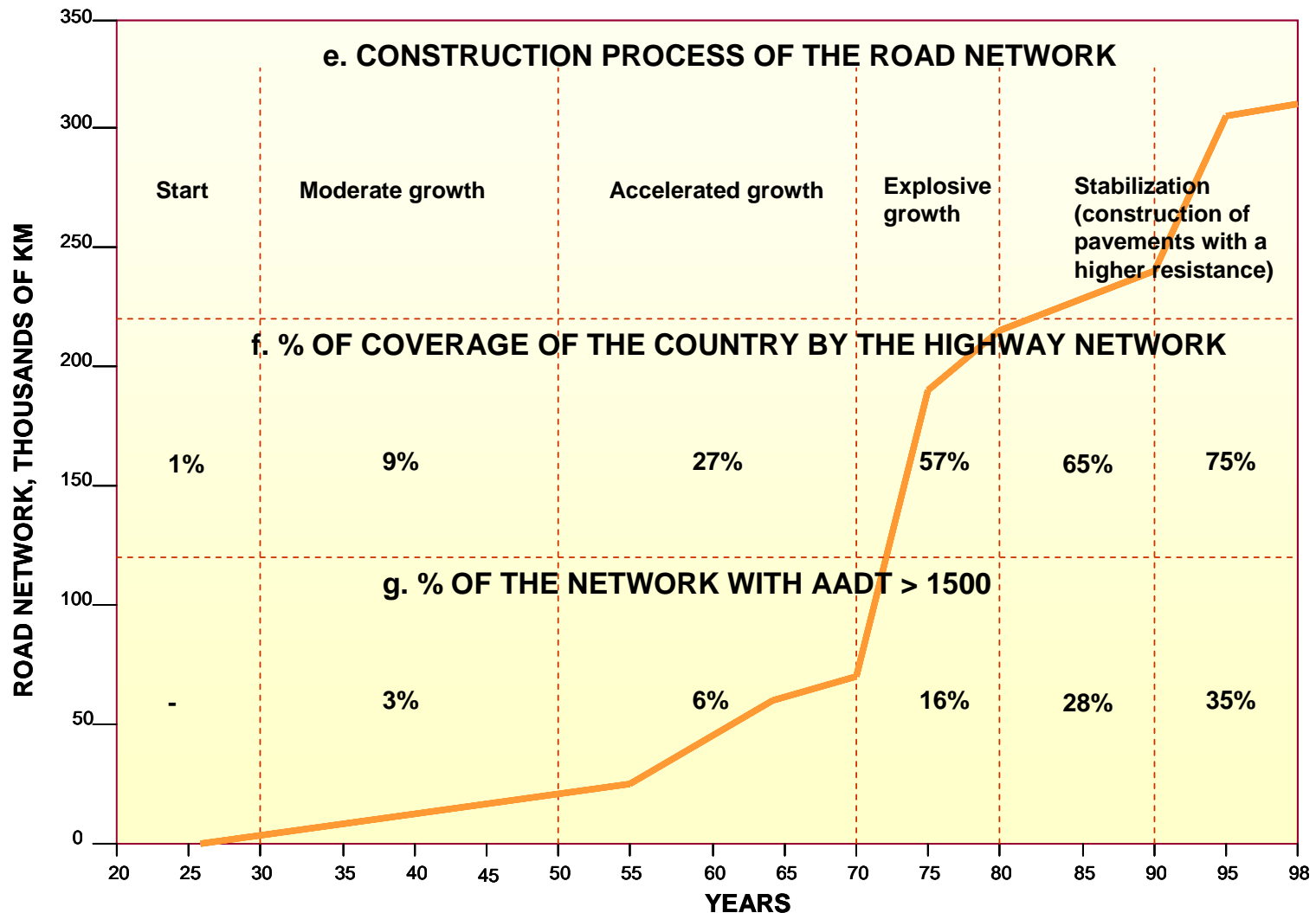
**1980**



# EVOLUTION OF THE MEXICAN ROAD NETWORK



# EVOLUTION OF THE MEXICAN ROAD NETWORK



# 1990: TOWARDS A MODERN COUNTRY



Year	Total road length, km	4 or more lanes road length, km
1925	0	0
1930	1500	0
1940	10000	0
1950	26000	120
1960	34000	200
1970	71500	400
1980	200000	1000
1990	240000	5500
2000	300000	10000
2006	340000	11000



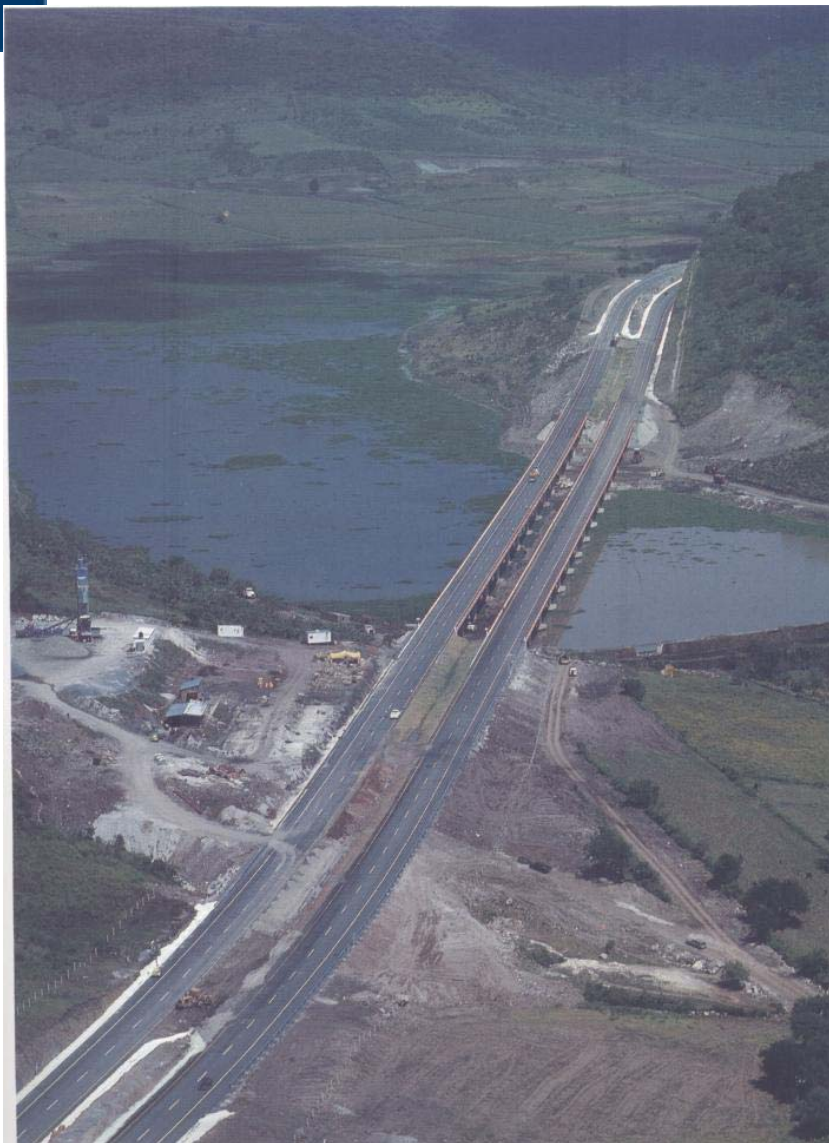
# 2000: THRESHOLD OF THE NEW MILENIUM



# ACTUAL ROAD CORRIDORS

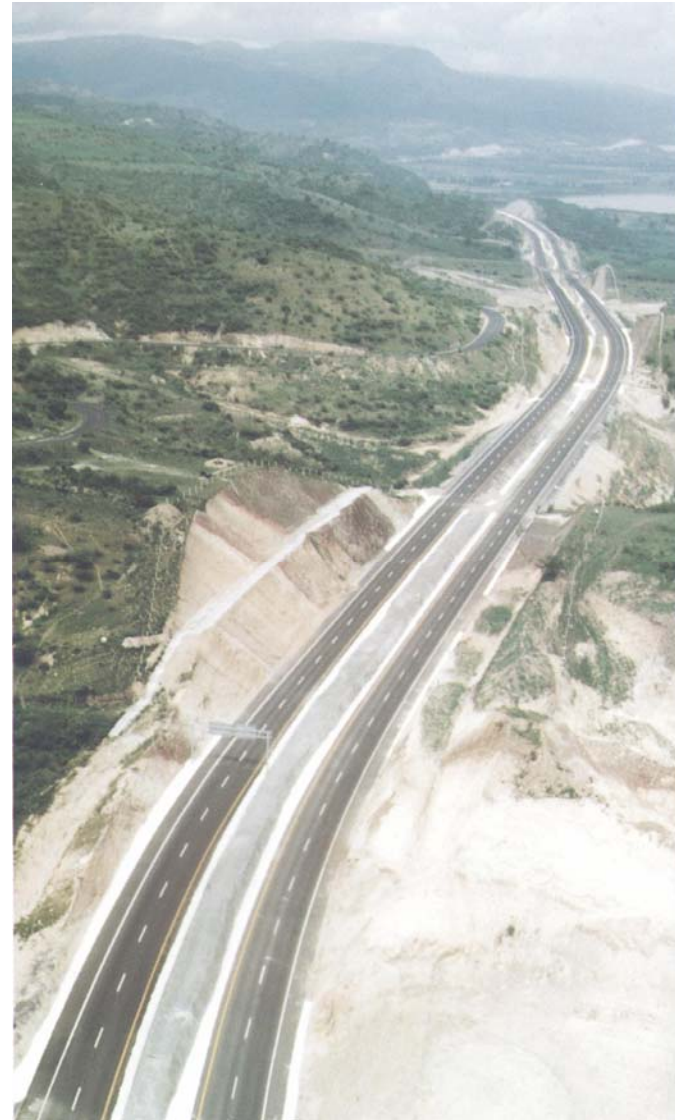


# MEXICAN HIGHWAYS

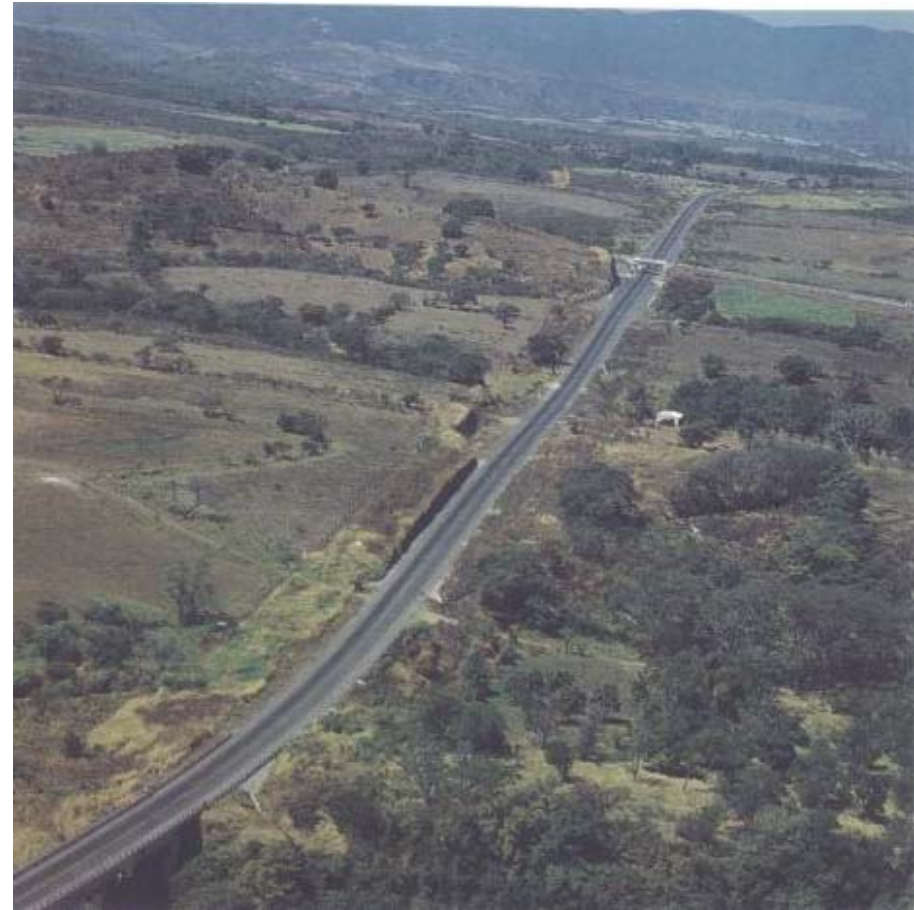




# MEXICAN HIGHWAYS



# MEXICAN HIGHWAYS







[www.imagenesaereasdemexico.com](http://www.imagenesaereasdemexico.com)

**¡VIVA MÉXICO!**

23e Congrès mondial de la Route - **Paris 2007**