

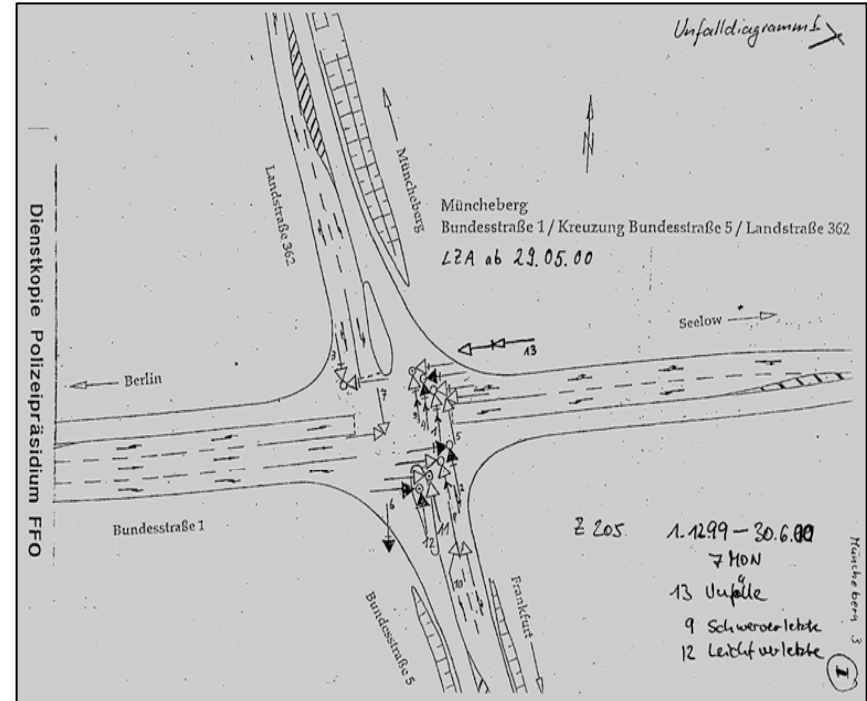


Special Session 20

Road Safety Audits and
Safe Design Policies
Introduction

Hans-Joachim Vollpracht
Chairman of TC 3.1
h_vollpracht@hotmail.com

Intersection with a new bypass in Germany

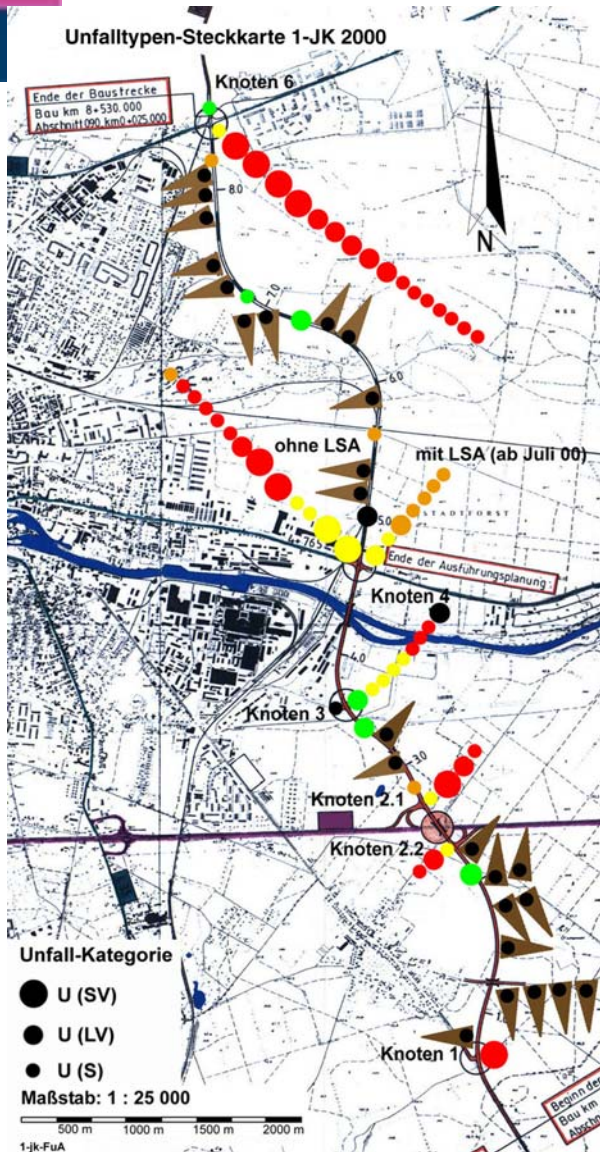


Drivers make mistakes if the situation suddenly changes.

(and never plant trees so close to the carriageway!)

Example of accident costs along a new constructed bypass

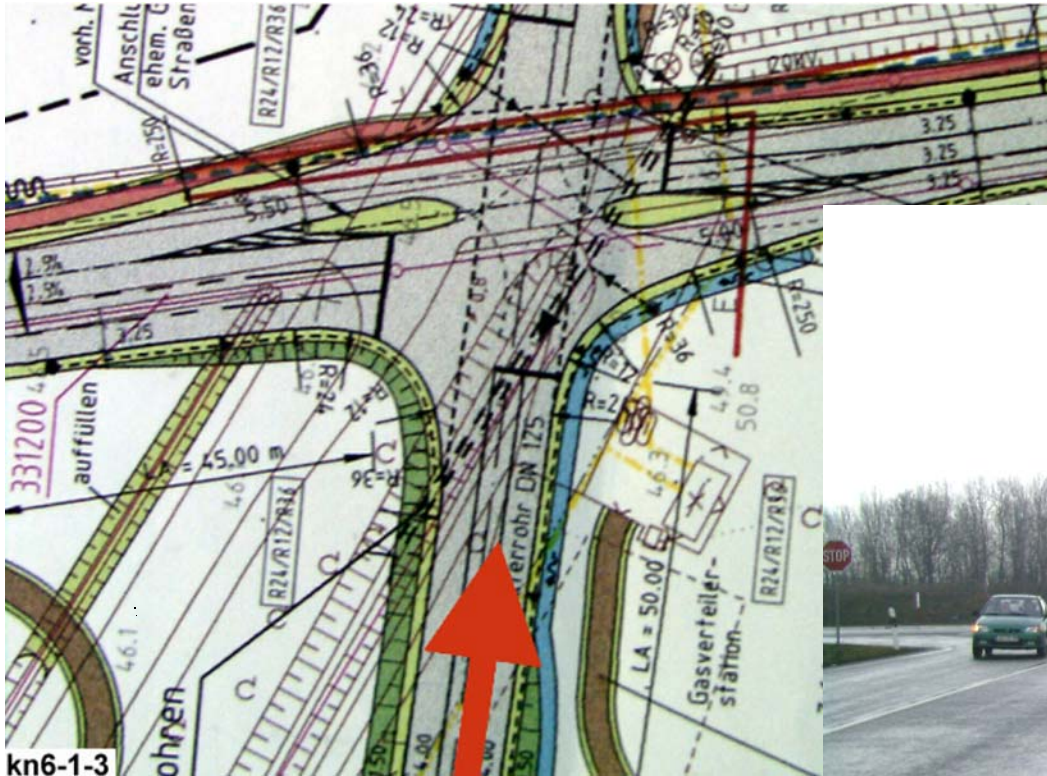
Year 2000



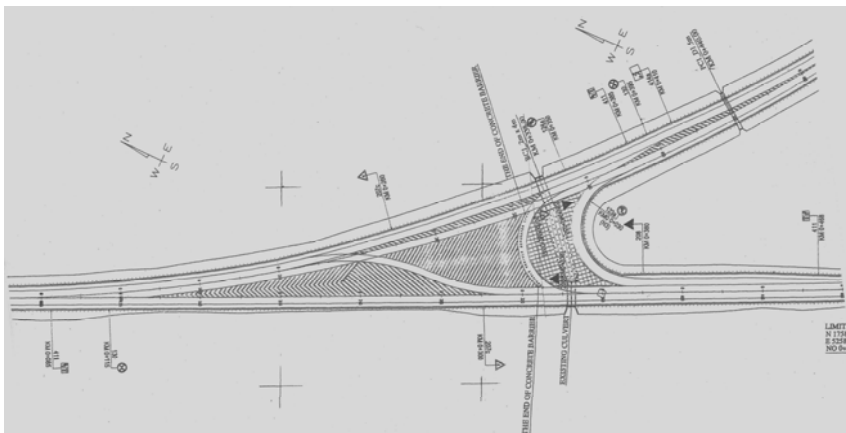
- 88 accidents
- 26 accidents with injuries and fatalities
- accident costs 3,68 Mio EUR/a

- 54 accidents at intersections
- 22 accidents with injuries and fatalities
- accident costs at intersections 3,41 Mio EUR/a

Contradiction about the right of way between traffic signing and lay out

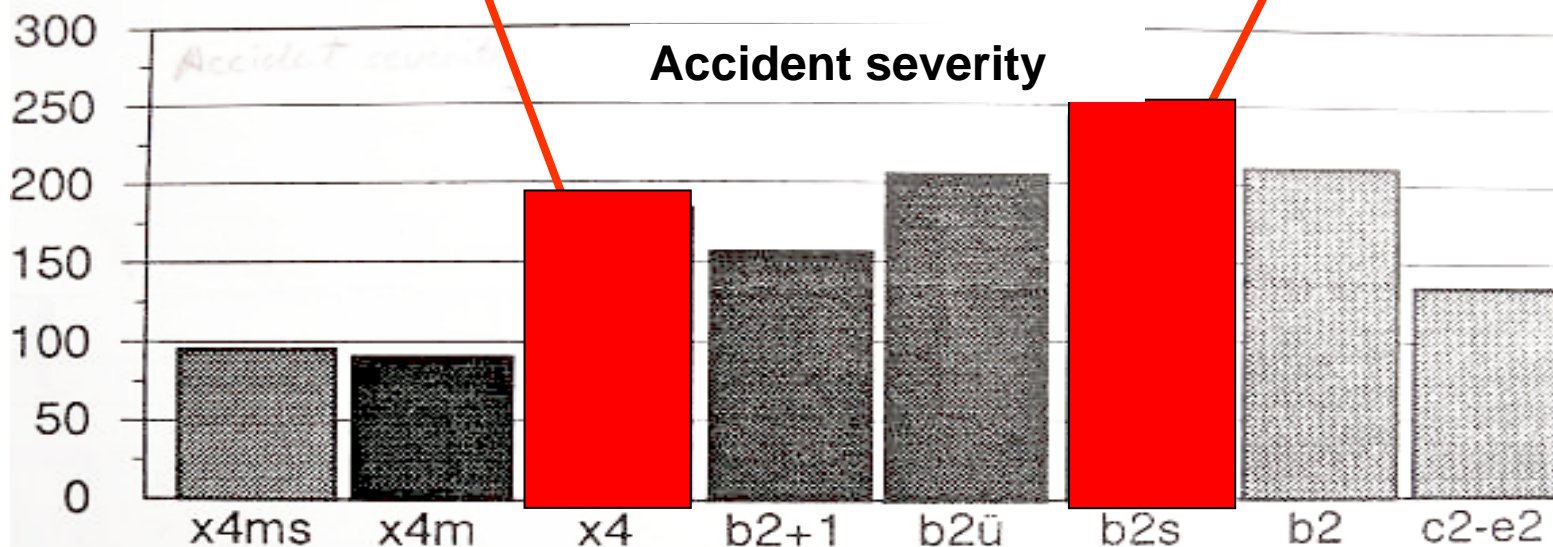


Black spots at intersections of the Y-type in Europe and Asia

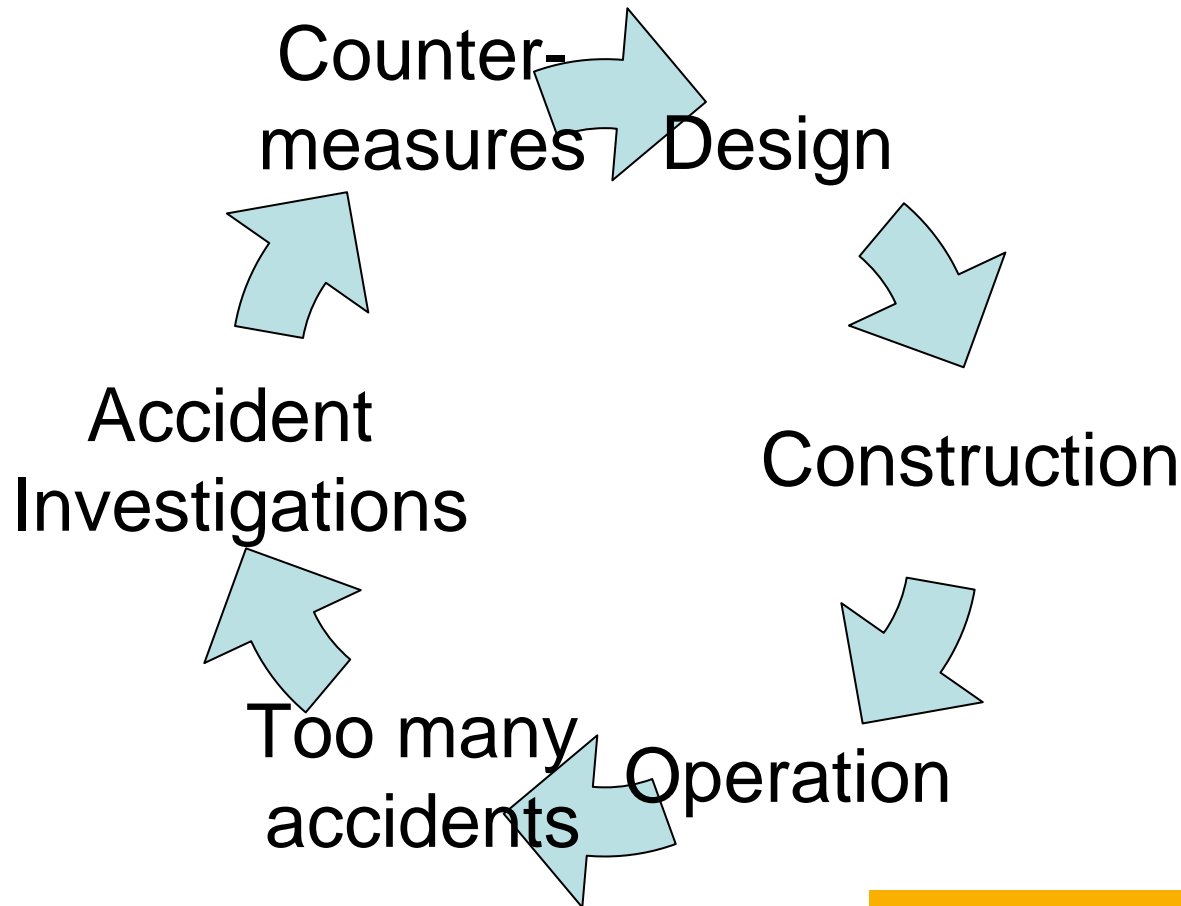


No clear regulations for the right of way and many conflict points

Unsafe cross sections



The traditional road engineering approach to safety....



....is reactive



**Systematic pro active approaches.
The definition of Kuala Lumpur:**

Road Safety Audit is a

- ***formal systematic road safety assessment of road or road scheme***
 - ***carried out by an independent, qualified auditor or team of auditors***
 - ***who report on the projects accident potential***
 - ***for all kinds of road users.***
- 

Dangerous design policy

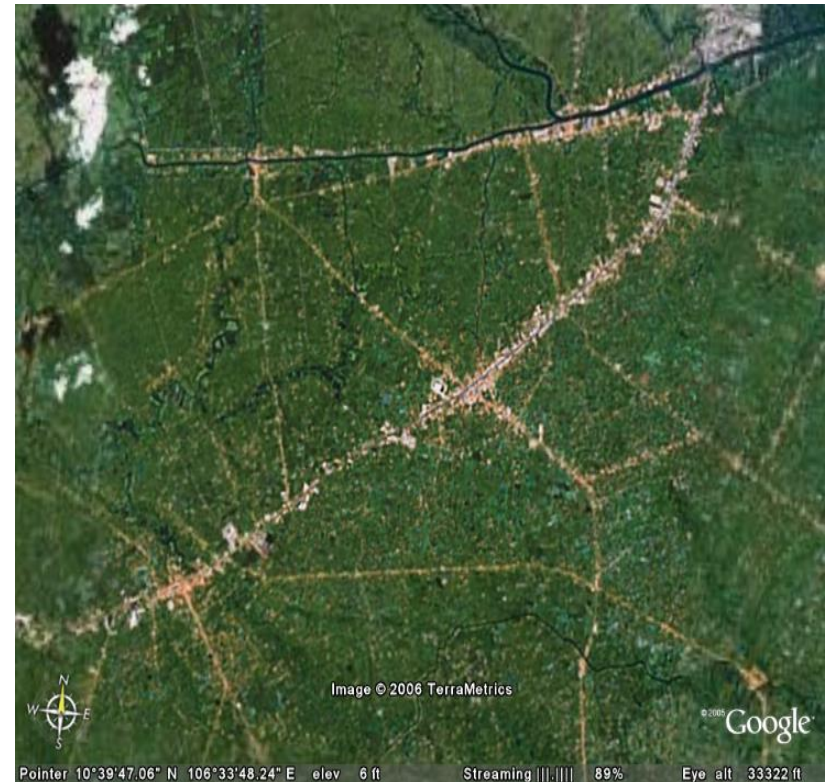


Results in quick losses by development aid

High Speed and the needs of vulnerable road users are neglected



Local mistakes of urban development and endless linear settlements may be...



...the most crucial disaster for road safety
in developing countries

23e Congrès mondial de la Route - Paris 2007

An efficient and safe road network is organized like our blood system:



It is a hierarchy of

- Main arteries**
- Distributors and**
- Capillaries**

to access the single cells in the muscles and organs.