



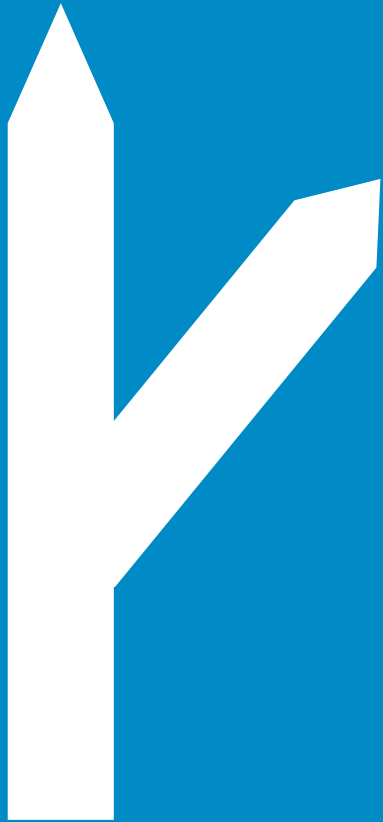
The management of congestion

Steve Gooding

- Department for Transport, UK
- Director, Road Pricing
- Steve.gooding@dft.gsi.gov.uk

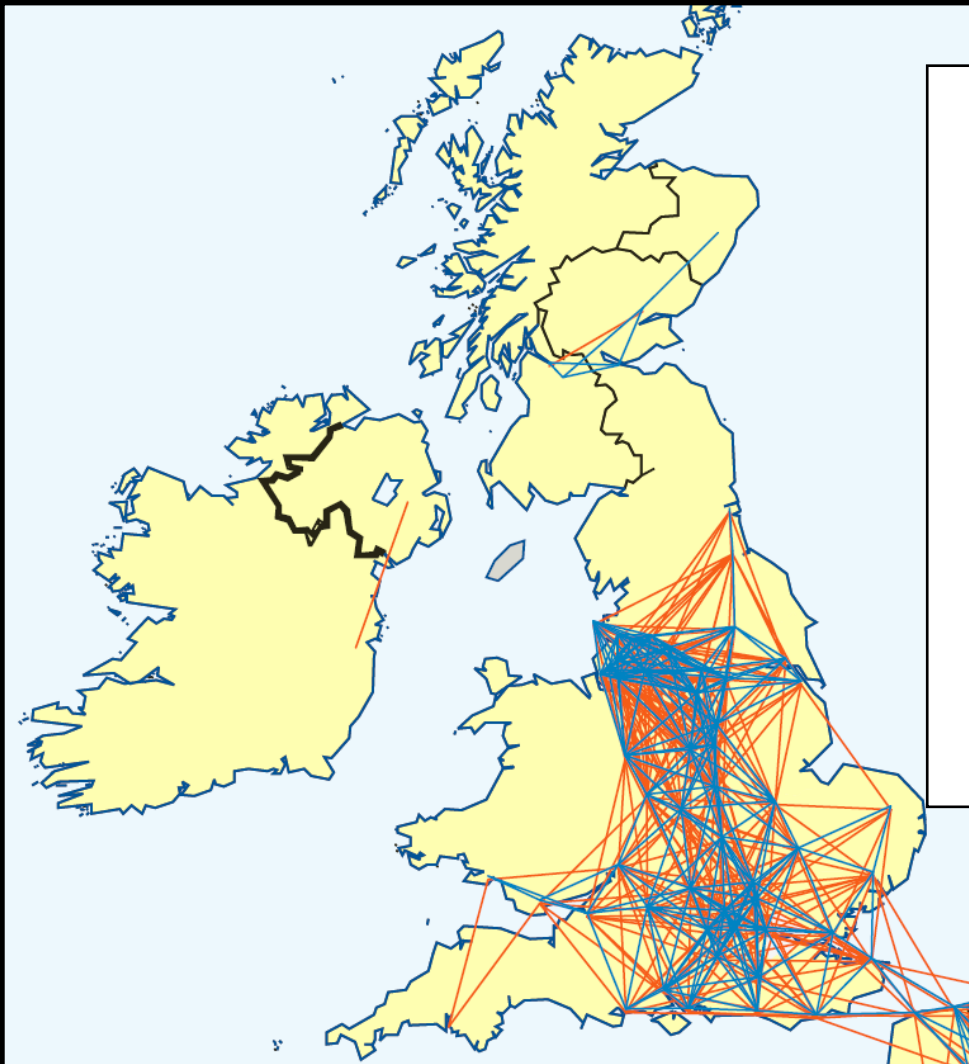
Department for
Transport

Structure of presentation



1. the problem
2. measure
3. target
4. manage
5. invest
6. inform
7. pricing

1. The problem – (i)

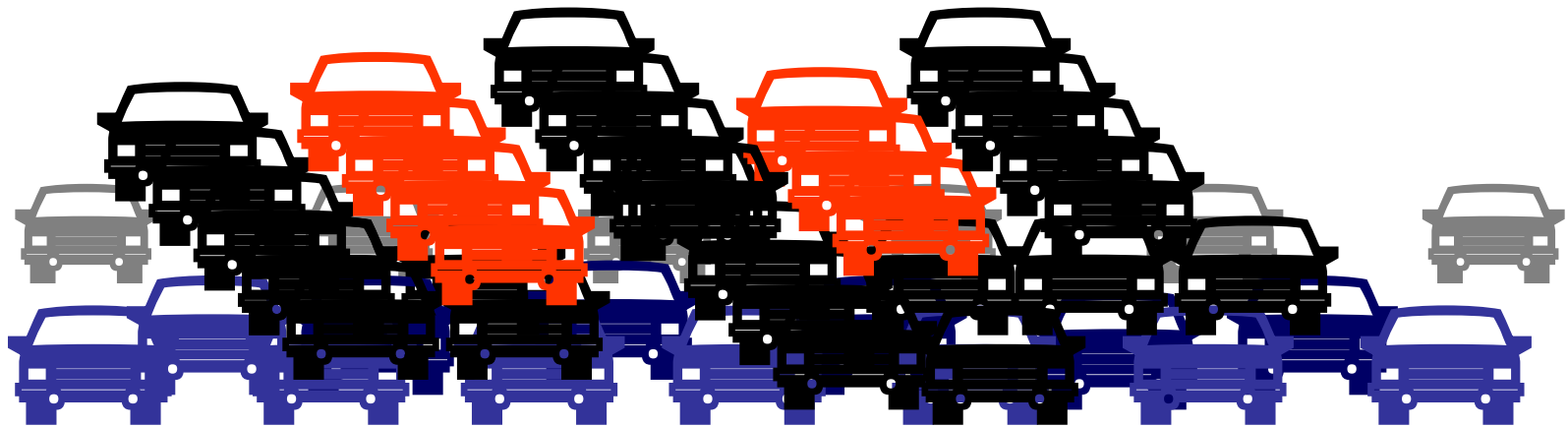
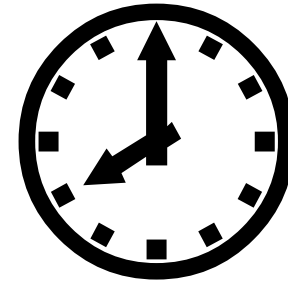


Distance between
centres of urban
areas

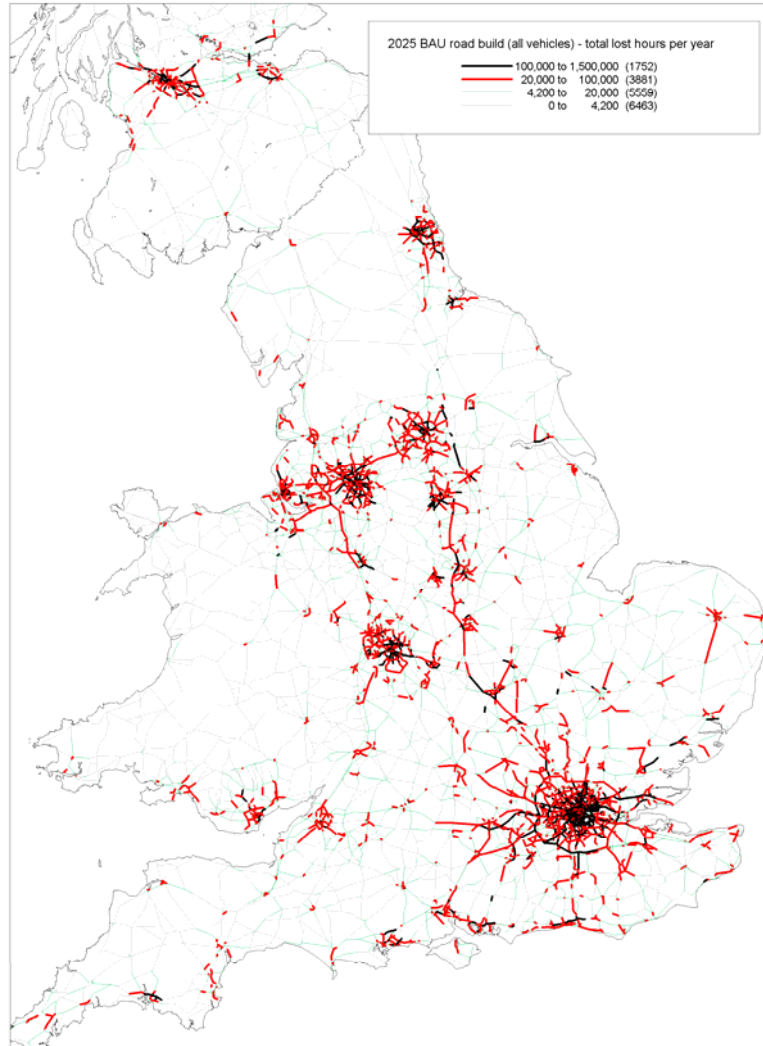
— less than 100 km

— 100 km to 150 km

1. The problem – (ii)



1. The problem – (iii)



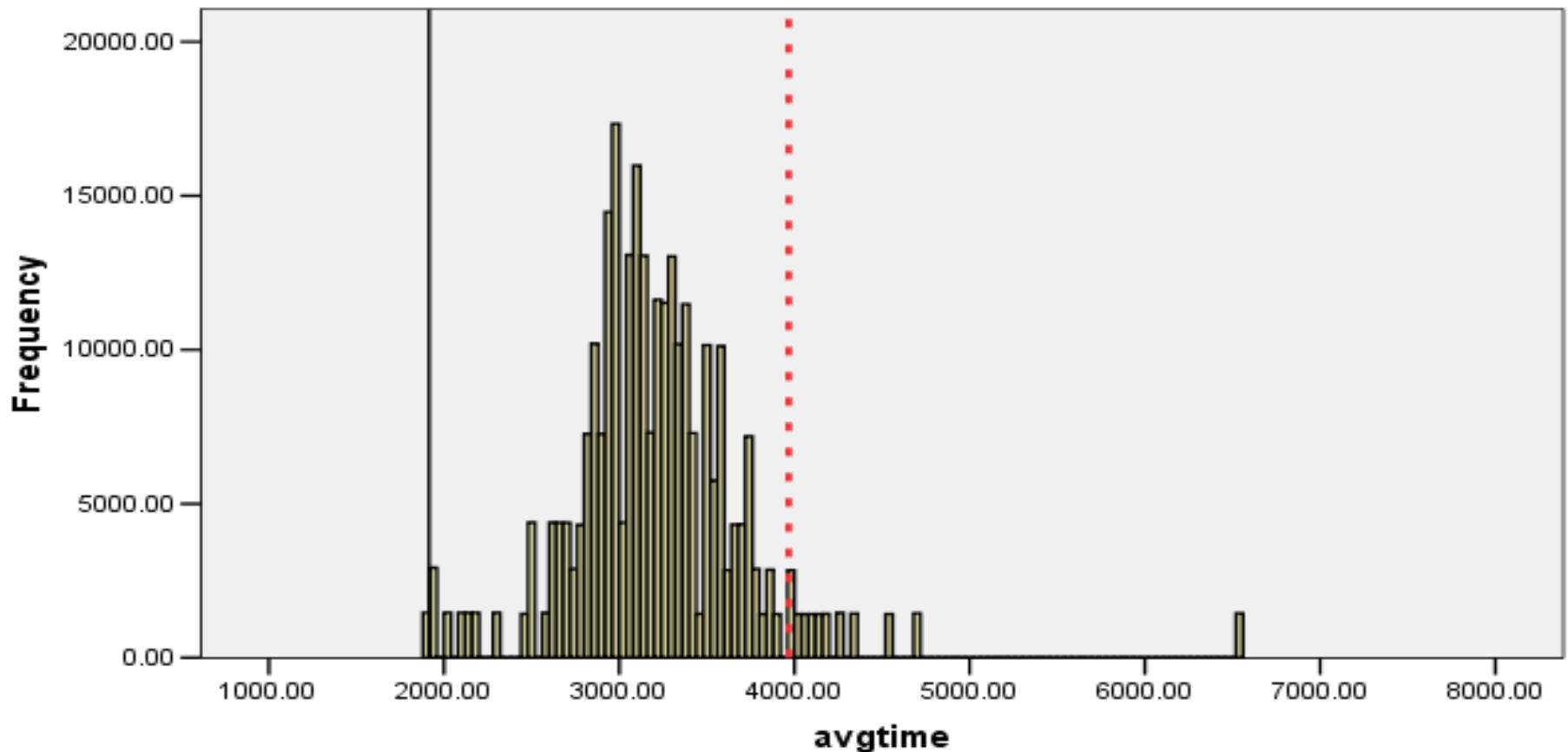
Sir Rod Eddington's review

This is a picture of 2025

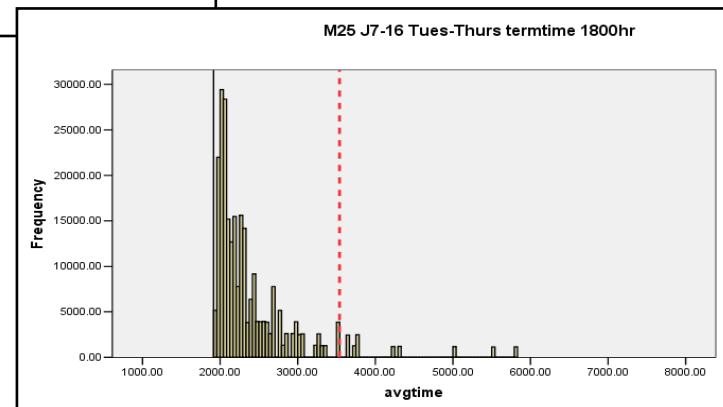
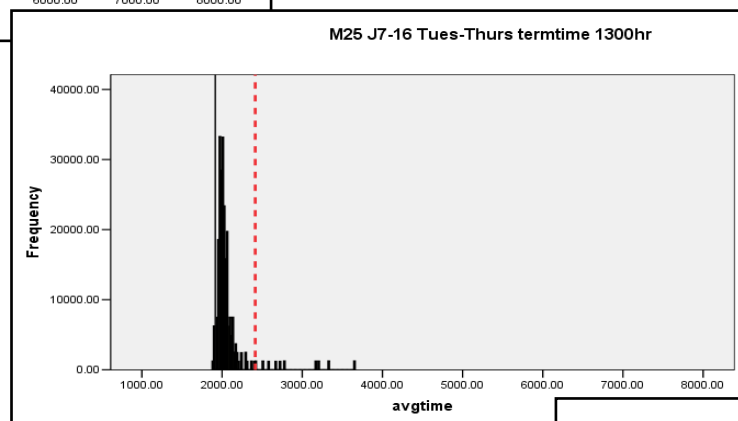
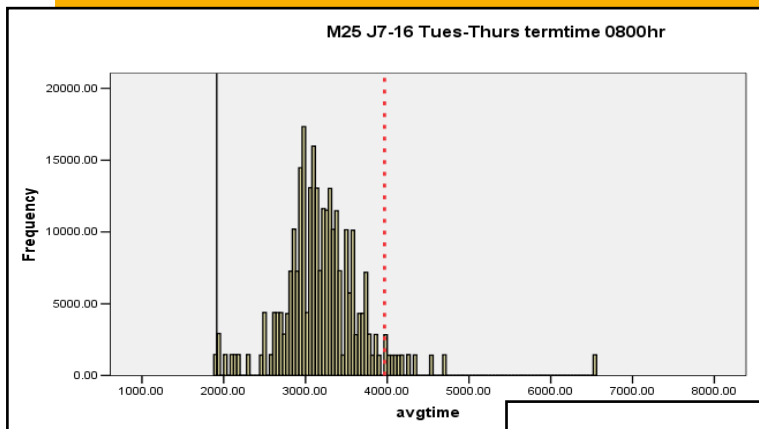
**Red lines =
20-100,000
Black lines =
100-150,000**

2. Measuring congestion – (i)

M25 Junction 7 – Junction 16, Tues – Thurs,
termtime, 08.00 hrs



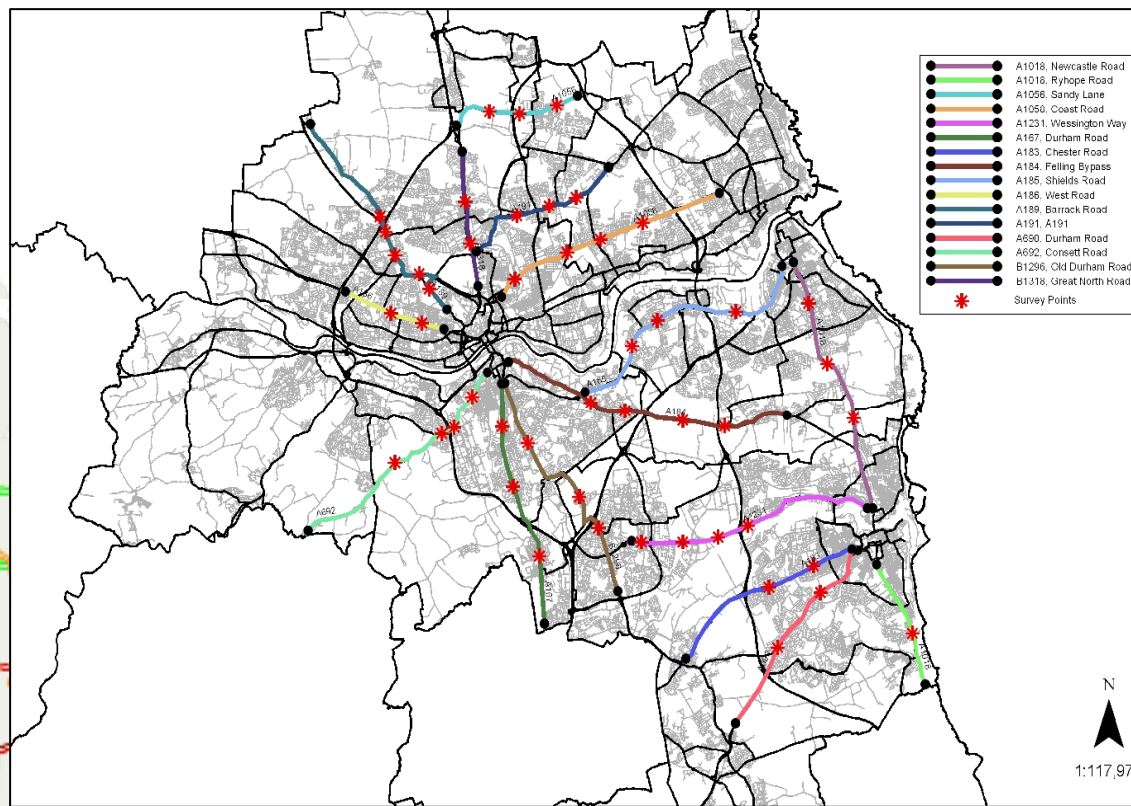
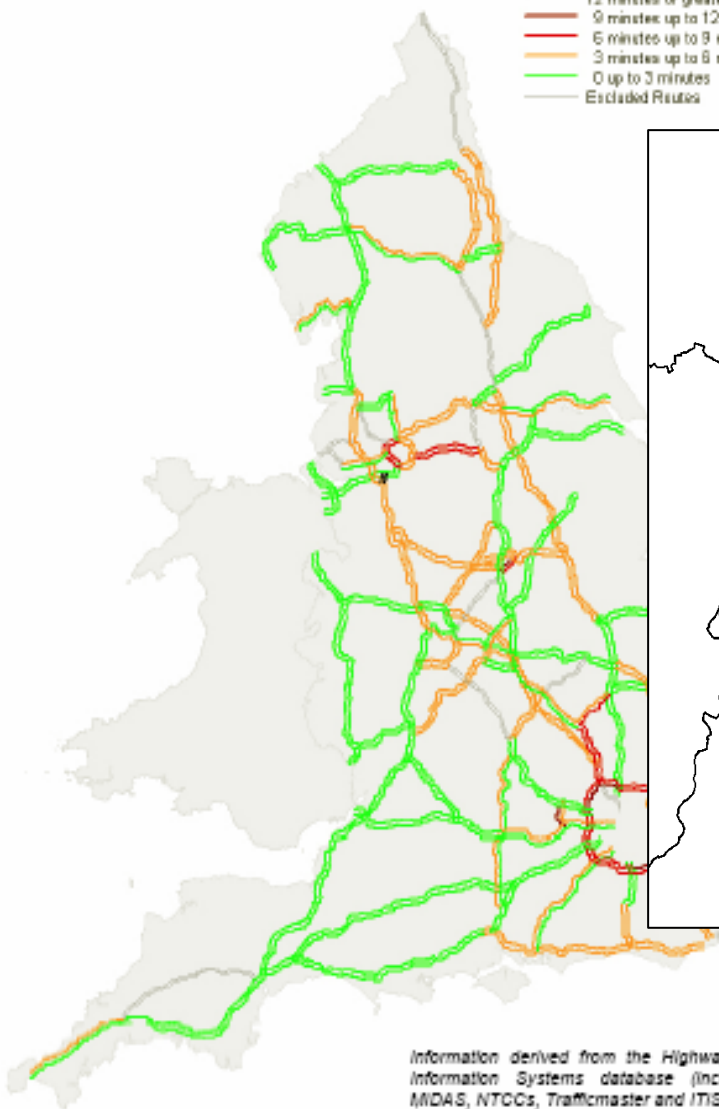
2. Measuring congestion – (ii)



3. Targeting congestion

Average Delay per 10 Vehicle Miles (count)

- 12 minutes or greater (0)
- 9 minutes up to 12 minutes (4)
- 6 minutes up to 9 minutes (14)
- 3 minutes up to 6 minutes (61)
- 0 up to 3 minutes (80)
- Excluded Routes (30)

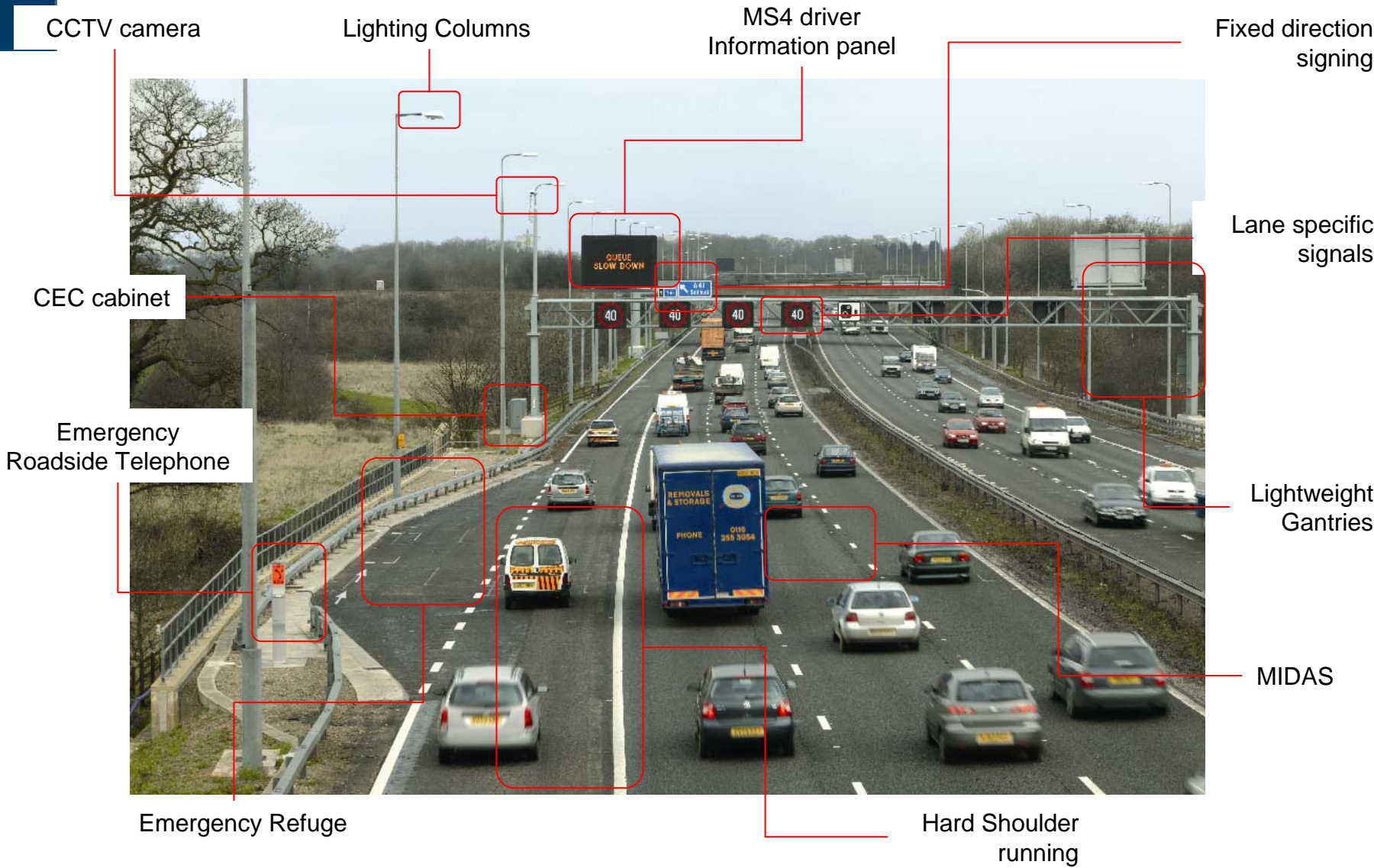


Information derived from the Highways Agency Traffic Information Systems database (including data from MDAS, NTCCs, Trafficmaster and ITIS Holdings)

4. Managing the network



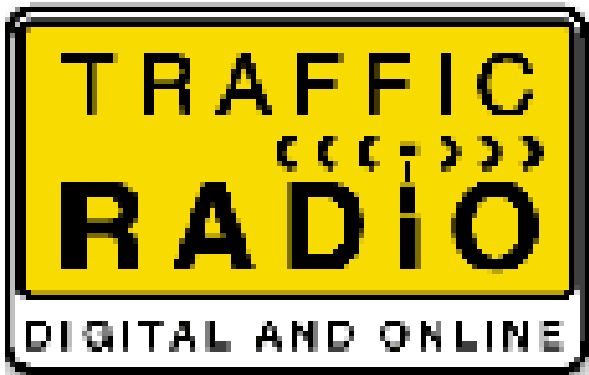
5. Investing to add capacity



6. Information

Travel planning services

- Transport Direct
- Traffic England
- Commercial



transport direct.info Connecting People to Places

Home Quick planners Door-to-door Maps Live travel

Train | Flight | Coach | Car | City-to-city | Station/Airport

New search Amend journey Print

Journey(s) found for M6 (Road) to M6 (Road)

Maps Amend date/time

24 hour clock help Summary Details Maps Extend journey

Outward journey for Fri 14 Jan 05 leaving after 08:00

| Leave | Arrive | Duration | Select |
|-------|--------|---------------------|-----------------------|
| 08:00 | 08:16 | 16 mins / 16.7miles | <input type="radio"/> |

Maps: Outward journey

Map of full journey Show route Help

Information Select new location Zoom in Previous view Help Zoom out

You can view different stages of the journey by selecting them in the list and clicking 'Show Route'. Choose one of the options (above), change the route view or select symbols to show on the map.

Clicking on the map will zoom and centre

Key Help

High traffic Medium traffic Low traffic Traffic unknown Start location End location

Map Symbols Help

You can only view map symbols on the map in the highest five zoom levels. (outlined in zoom scale)

Symbols can show:

- Transport stops
- Accommodation
- Sport & entertainment
- Attractions
- Health
- Education
- Public buildings & services

Overview map

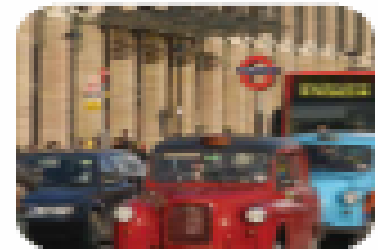
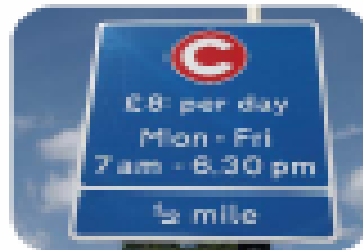
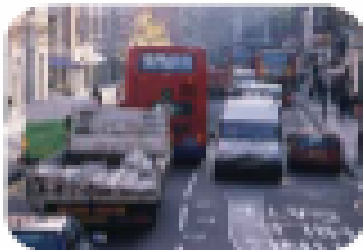
7. Pricing - London

Transport for London

Central London

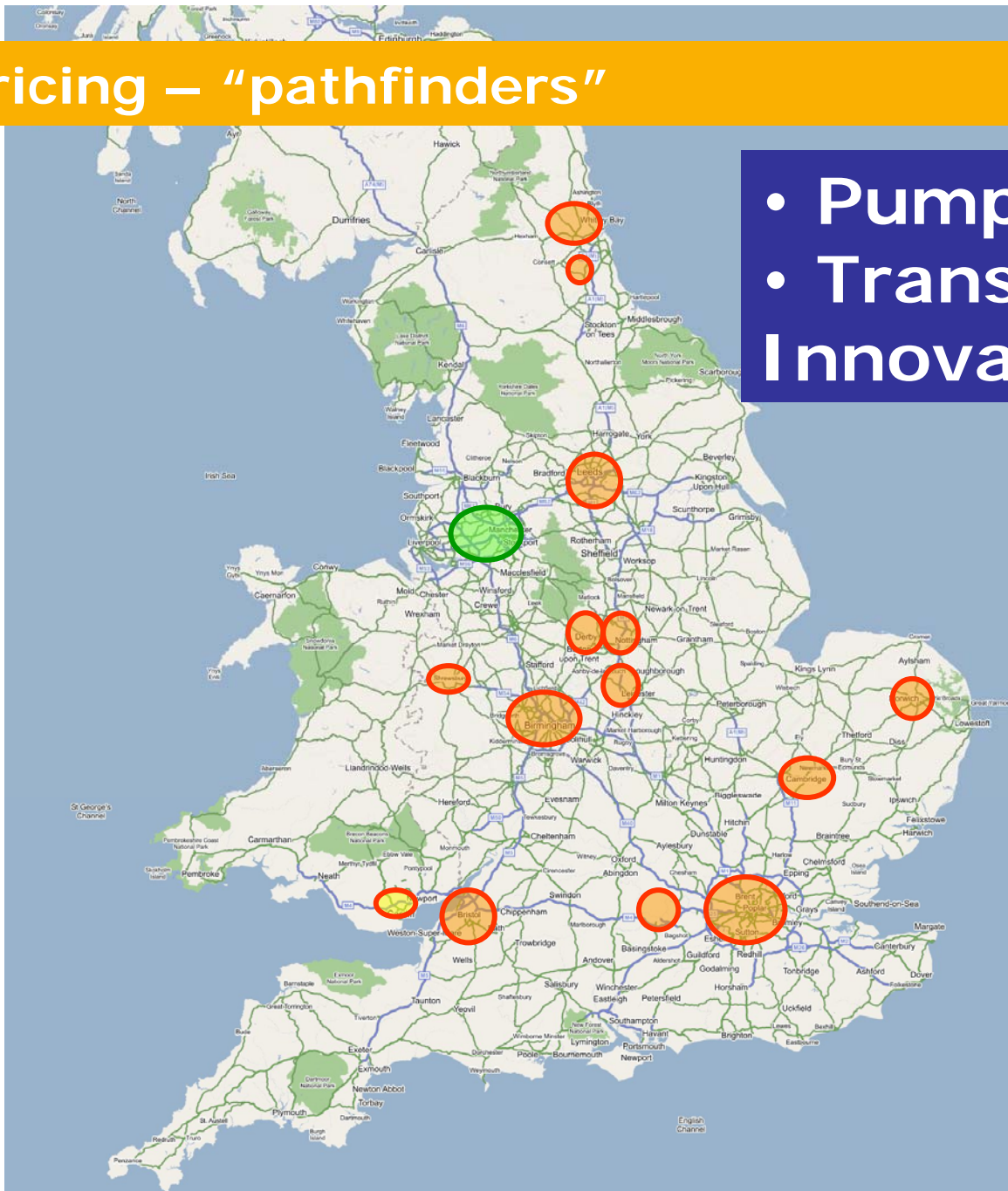
 Congestion charging

- February 2003
- February 2007



7. Pricing – “pathfinders”

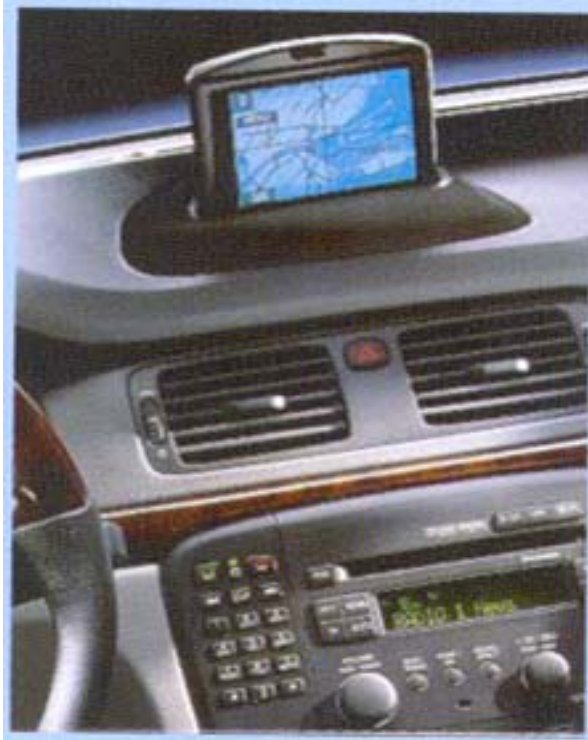
- Pump priming
- Transport Innovation Fund



7. Pricing – (iii)



7. Pricing – “trust”



7. Pricing – Demonstrations

PIN
OJEU

- **System**
- **Compliance**
- **Standards**





The management of congestion

Steve Gooding

- Department for Transport, UK
- Director, Road Pricing
- Steve.gooding@dft.gsi.gov.uk

Department for
Transport