



Travel and Traffic Information Services

Richard Harris

- WSP Group
- Technical Director
- richard.harris@wspgroup.com





The fundamental requirement

Where am I, which way, how long?

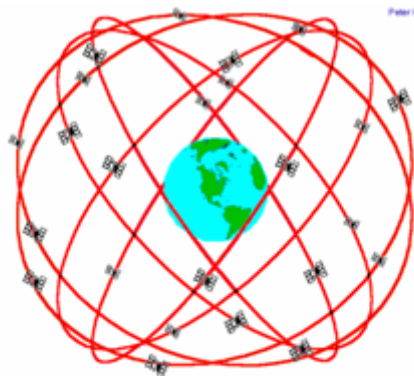
6 BC Pythagoras: Earth a sphere

250 BC Eratosthenes: Circumference

1760 John Harrison H4 Longitude

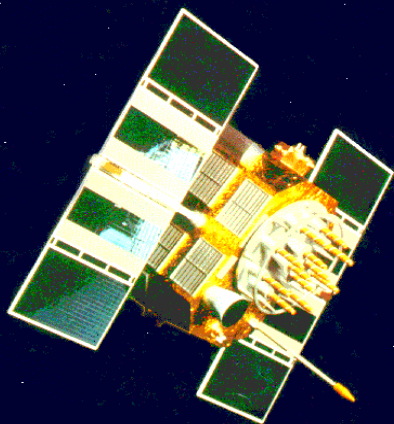
1983 Korean Airlines 747 (269 killed)

GPS and Galileo



Peter H. Dana 9/22/06

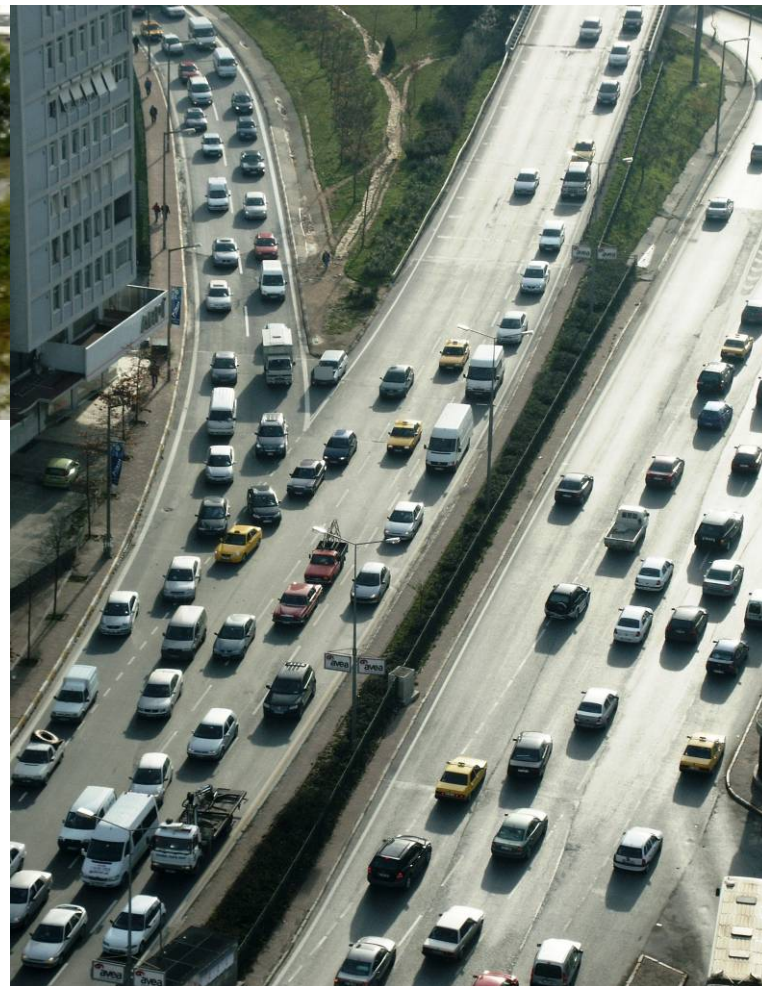
GPS Nominal Constellation
24 Satellites in 6 Orbital Planes
4 Satellites in each Plane
20,200 km Altitudes, 55 Degree Inclination



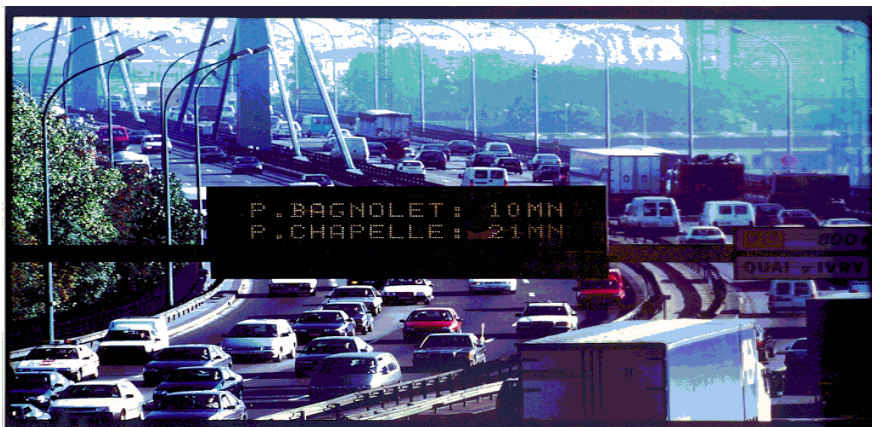
Satisfying expectations



Road open



Traffic



Journey time

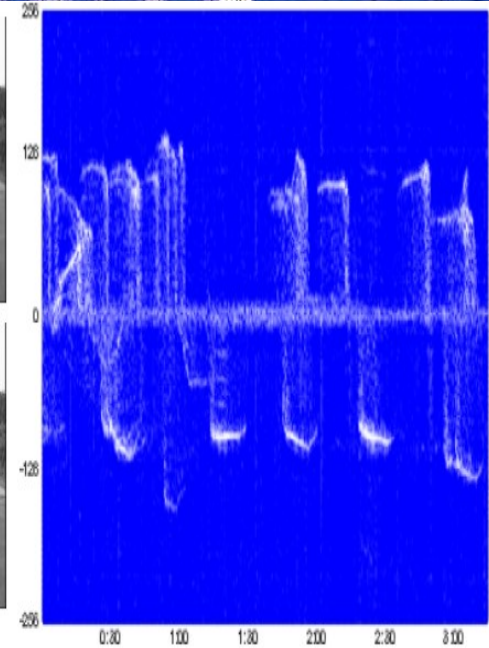
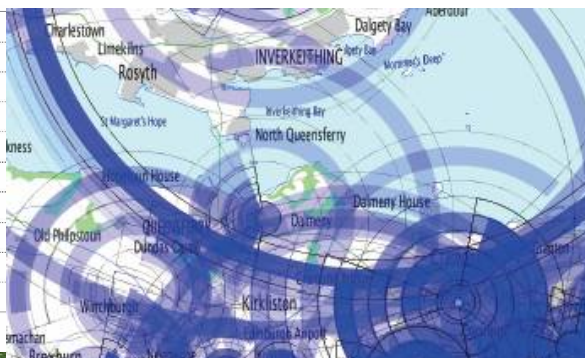
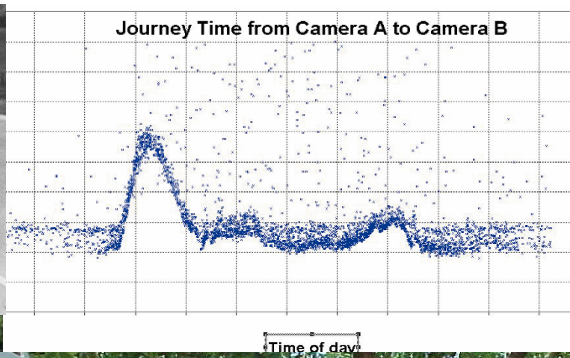
Information depends on:

- Data sources
- Data processing
- Data management
- Dissemination

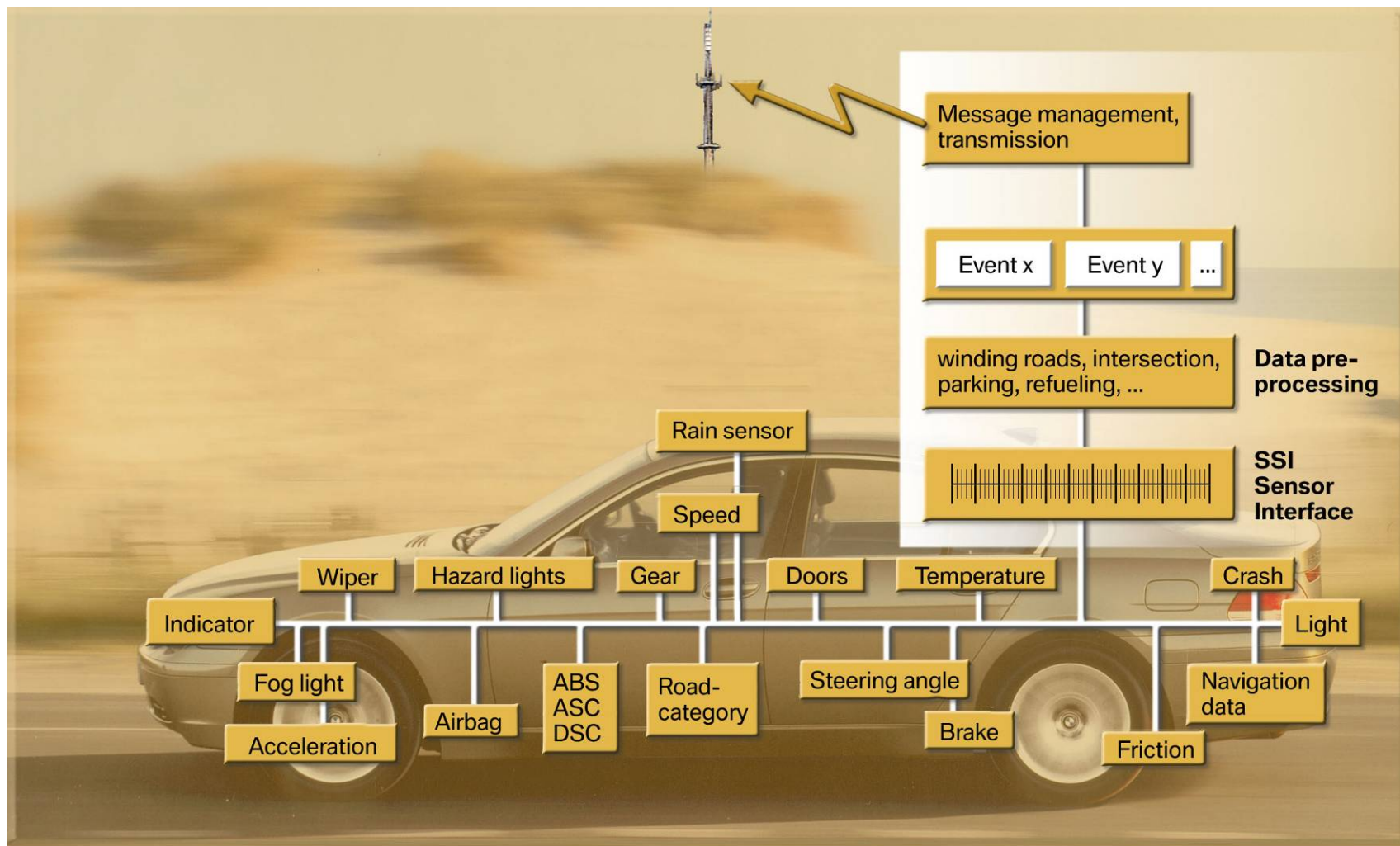


- Operational agreements
- Standards
- Level of service
- Accuracy
- Timeliness
- Confidence

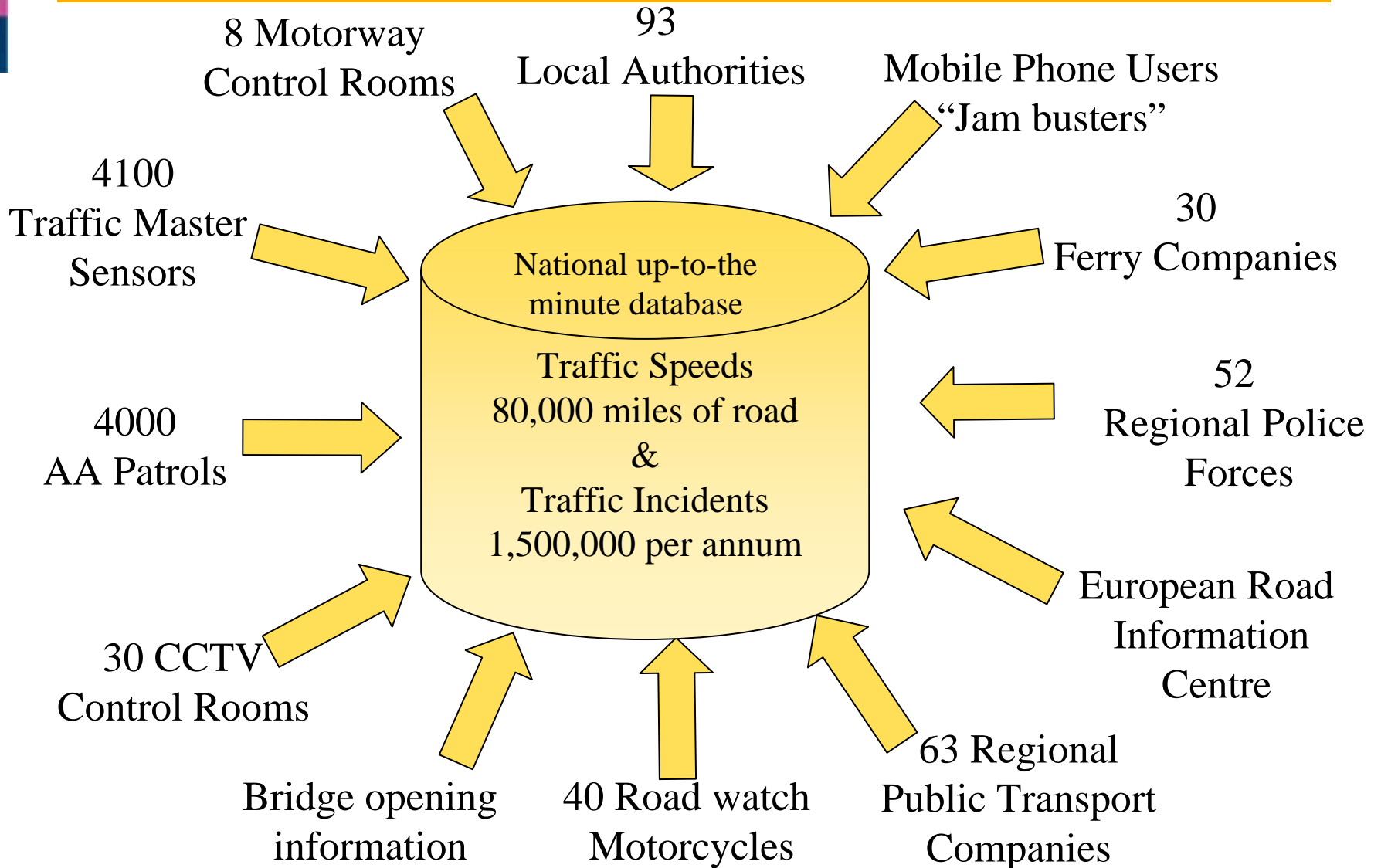
Data collection



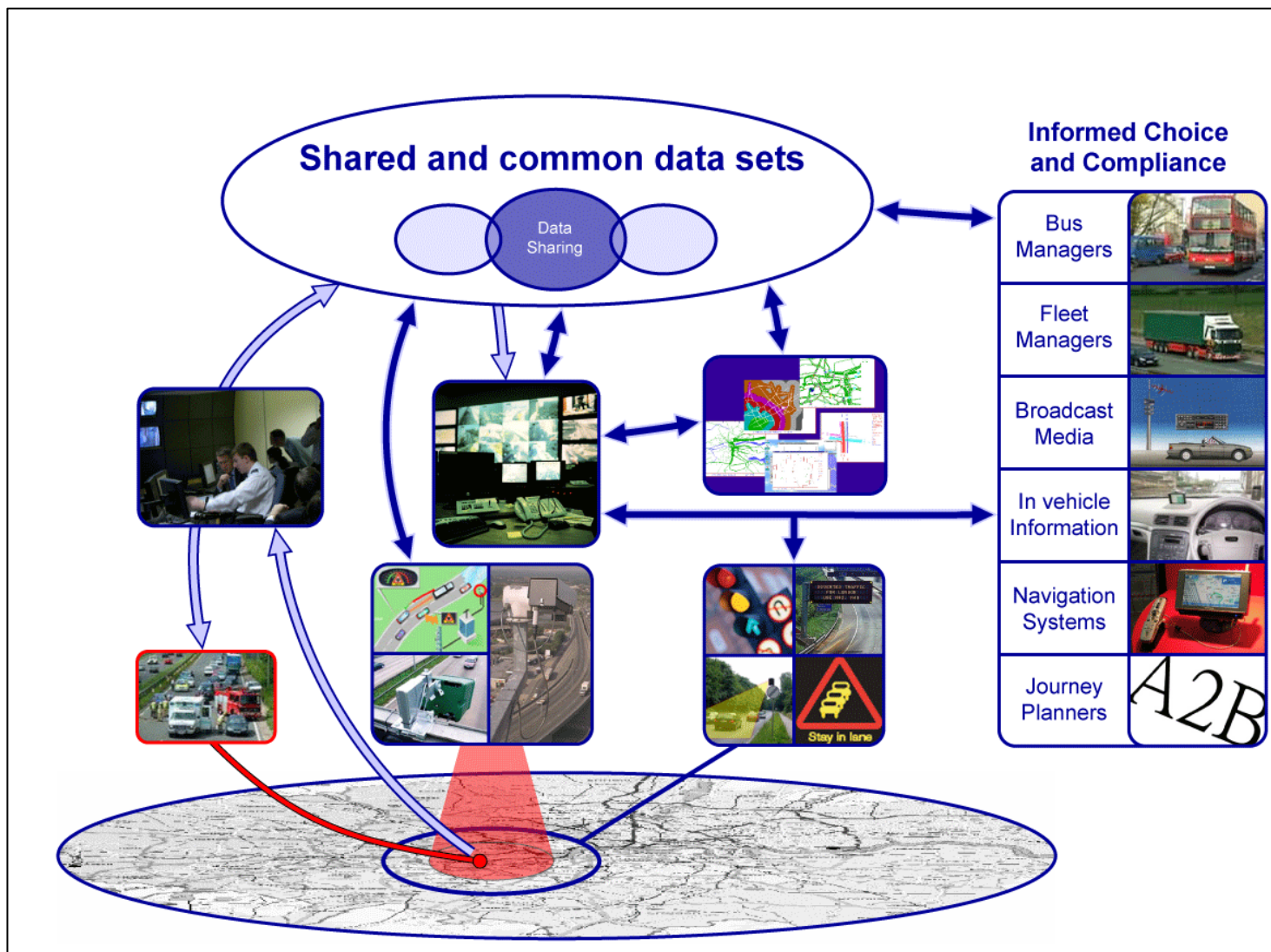
Vehicle based systems



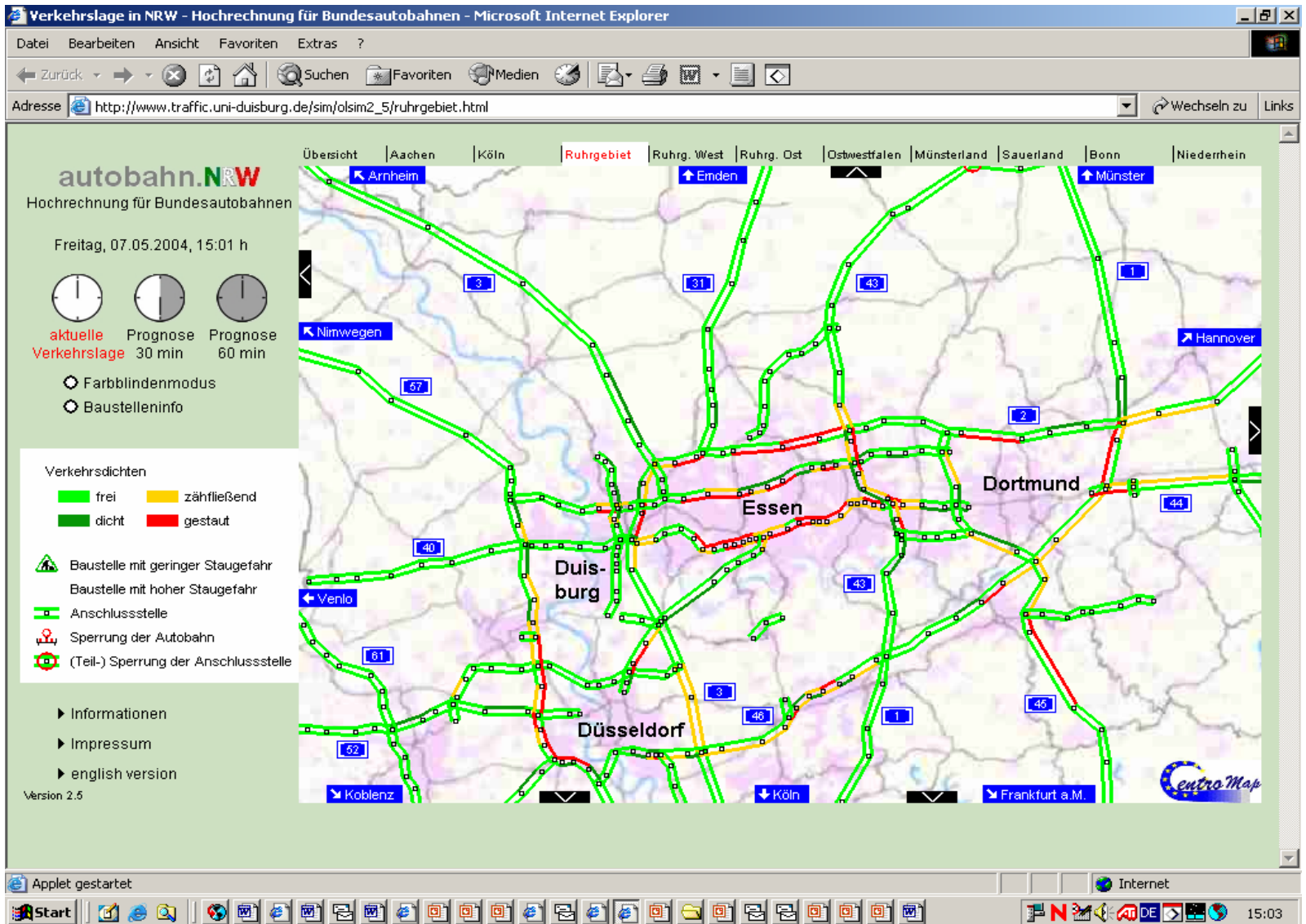
Numerous sources



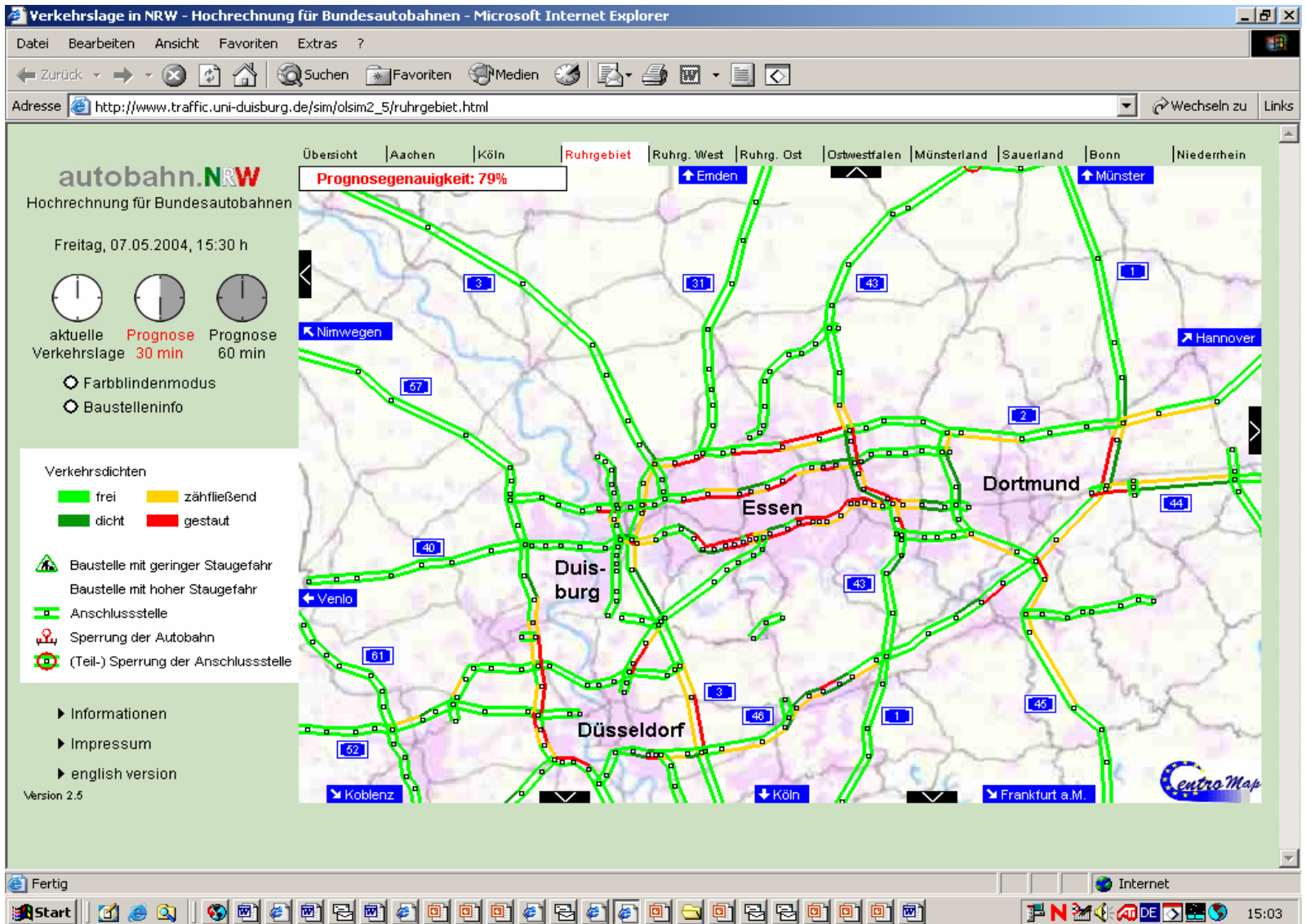
Integrated procedures



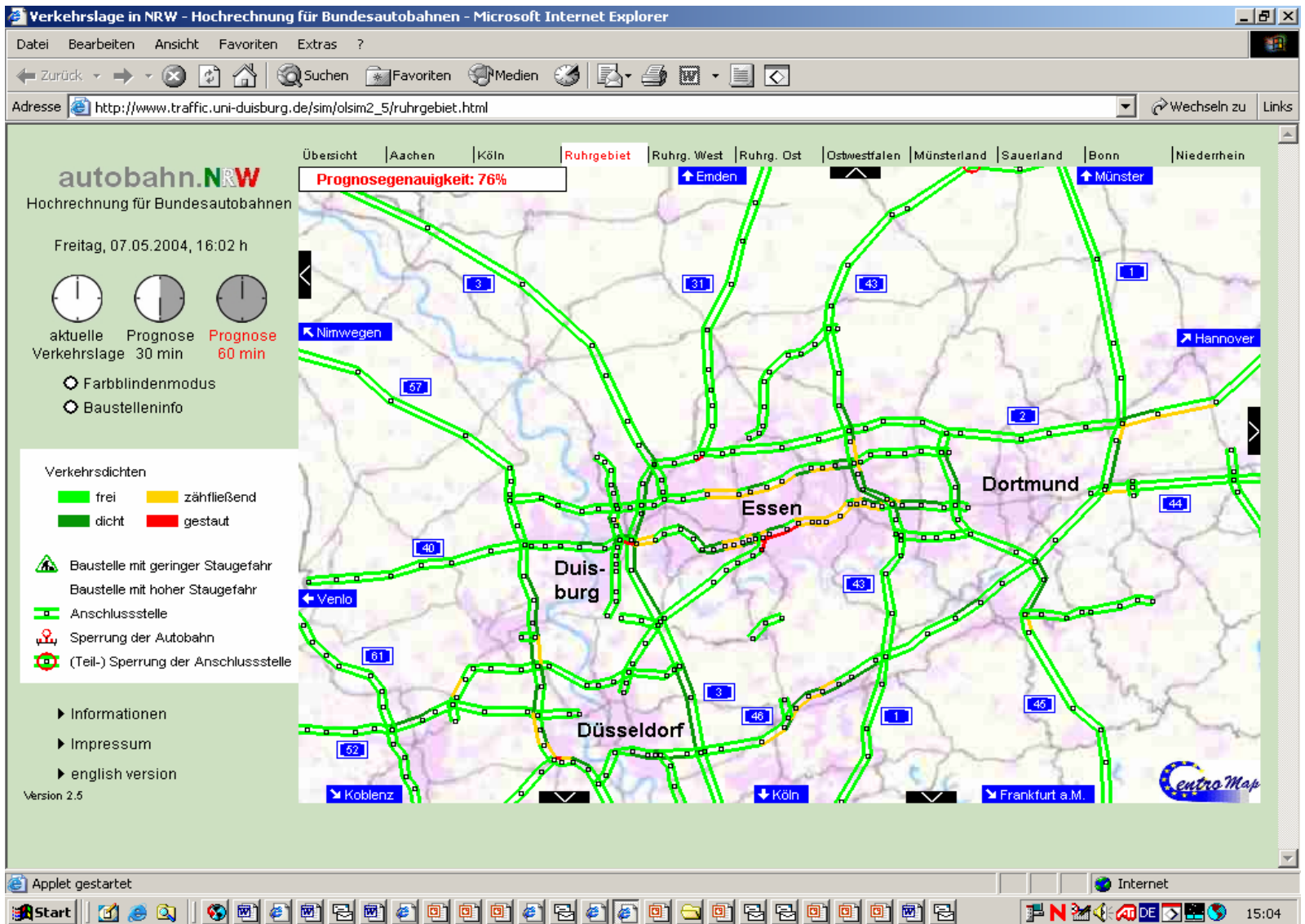
NRW Travel Times



NRW Travel Times 30 minutes



NRW Travel Times 60 minutes





Economy

Not just for developed countries

Key factor in developing economies

Transport network key

Benefit from work already done



Conclusion

Customer care real focus

Informed travellers help network efficiency

Reliable information needed

Technology support - Policy driver

Organisational issues most complex

Acknowledgements

John Miles
Members of TC1.4
Network Operations

Informed travellers
are safer and smarter

